

The Alabama ENGINEER

STATE OFFICERS

PRESIDENT
PRESIDENT-ELECT
PAST PRESIDENT
VICE PRESIDENT-NORTH
VICE PRESIDENT-CENTRAL
VICE PRESIDENT-SOUTH
SECRETARY
TREASURER
REGIONAL DIRECTOR
EXECUTIVE DIRECTOR

2001-2002

Guy O'Connor, PE
Connie Gipson, PE
Randy Bunt, PE, CM
Kevin Meyer, PE
Bernie Corker, PE
Danny Holmberg, PE
Kathryn Wilhelm, PE
J C Vance, III, PE
Lamar Hawkins, PC, PE
Pat Christians

A publication of the **ALABAMA SOCIETY OF PROFESSIONAL ENGINEERS**

WINTER 2002 ISSUE

PRESIDENT'S MESSAGE

GUY O'CONNOR, PE

We are now at the mid-year point and we are continuing to make progress. The following is a brief update on the status of the Society.

➤ **Chapters**

As detailed in the attached Chapter Reports, our chapters are very active and continue to provide excellent programs to our members. I extend my thanks and appreciation to each our chapter officers. It is primarily through your efforts at the local level that we serve our members and positively affect the communities in which we live.

➤ **Committees**

Our committees continue to make progress. The Annual Meeting has been set for June 30 – July 3, 2002 at the Grand Hotel Marriott, Point Clear, Alabama. Thanks to the efforts of Connie Gipson, P.E. (ASPE President-Elect), this promises to be an exceptional meeting. Please make plans now to attend. Mr. Hack Sain, P.E. continues to lead our ASPE/PAC/JECA Partnership Committee and keep us informed of current legislation.

Thanks to the leadership provided by Kathryn Wilhelm, P.E., the format and content of our website and the *Alabama Engineer* continue to be improved. Our website and this journal are our primary means of communicating with our members. If you have any suggestions as to how we can improve our Society or better serve our members, please provide feedback through our website. Danny Holmberg, P.E. (Mathcounts Chairman) has set the state Mathcounts competition for March 16, 2002. The competition will be hosted by our Montgomery Chapter and will be held at the AUM campus in Montgomery, Alabama. Through the efforts of Buzz Vance, P.E. (ASPE Treasurer) our financial standing remains solid and our accounting systems improved.

At this time each year the State and local chapters prepare a list of candidates from each of our office and committee positions for next year. All members are requested to consider taking the next step and becoming an active leader in our Society.

➤ **Sustaining Partners**

The following is a list of our current state and local ASPE sustaining partners: Volkert & Associates, Inc., Prism Systems, Inc., University of Alabama Birmingham, Tennessee Valley Authority. For a complete listing of Friends of the Society Contributors please refer to page 14. I extend my sincere thanks and appreciation to each of these companies. It is your sustained financial commitment and active ASPE member participation of your employees that forms the foundation for ASPE and enables ASPE to provide better programs and serve our Society and communities. I request that each of our members assist us in growing our foundation of sustaining partners.

➤ **Members in the News**

Mr. T. Keith King, P.E. will be inducted into the State of Alabama Engineering Hall of Fame on February 23, 2002. The banquet will be held at The Club in Birmingham. Mr. King has provided continuous service to ASPE for over 30 years, serving at the local, state and national levels. Mr. King's engineering, professional and civic contributions make him most deserving of this award. For the members of ASPE, I extend our sincere thanks and congratulations.

Thank you again to each of our state and chapter officers, committee members and our sustaining partners for their leadership and commitment in serving ASPE.

PLEASE VISIT REGULARLY THE NEW AND IMPROVED ASPE WEBSITE:

www.aspe-al.com

Thanks to Prism Systems, Mobile, for their continued support and maintenance of our website!



INSIDE THE ALABAMA ENGINEER

VOLUME 2, NO. 1 • FEBRUARY 2002

Editor, Kathryn A. Wilhelm, P.E.

- 1 **PRESIDENTS MESSAGE** Guy O'Connor, P.E., ASPE State President, ASPE Mobile Chapter
2 **INSIDE THE ALABAMA ENGINEER** Kathryn Wilhelm, P.E., ASPE State Secretary, Mobile Chapter
3 State Officer Profile: 2001-2002 ASPE State Treasurer J. C. "Buzz" Vance, III., P.E.
- NATIONAL & STATE NEWS**
4 NSPE Initiative for 2002 NSPE President Daniel Clinton, P.E.
4 NSPE 2002 Winter Meeting Summary
4 2002 Tri-State Engineering Society Meeting Connie Gipson, P.E., ASPE President Elect, Huntsville Chapter 4
NSPE 2002 Annual Convention & Exposition
5 Governor Siegelman's Engineer's Week Proclamation
5 Legislative Update Hack Sain, P.E. ASPE Birmingham Chapter
5 Mathcounts In Alabama Danny Holmberg, P.E., State Mathcounts Coordinator
- ASPE AROUND ALABAMA**
ASPE Chapter News
6 Birmingham Chapter News Darren Hamrick, P.E., Birmingham Chapter Secretary
6 Huntsville Chapter News Alvin Crawford, P.E., Huntsville Chapter Secretary
7 Mobile Chapter News Drew Dyas, P.E., Mobile Chapter Secretary
9 Montgomery Chapter News Kevin Blake, P.E., Montgomery Chapter Secretary
9 Muscle Shoals Chapter News J. D. "Don" Lokey, P.E., Muscle Shoals Chapter Secretary
9 Northeast Chapter News Kenneth Roy, P.E., Northeast Chapter Secretary
9 Tuscaloosa Chapter News Steve Nelko, P.E., Tuscaloosa Chapter Mathcounts Coordinator
- Cast Your Ballot**
10 2002 – 2003 State Officer Candidate Biographies
11 2002 – 2003 State Official Ballot
- ENGINEERING EDUCATION IN ALABAMA**
12 University of South Alabama College of Engineering Barbara Wooley, Assistant to the Dean, USA
- ENGINEERING LICENSING ISSUES**
13 Recent Policy Changes By The Board of Licensure for PE and PLS Regina Dinger, Executive Director
13 Your Invitation to JECA's Fourth Annual Legislative Reception
- SUSTAINING PARTNERS**
14 ASPE Sustaining Partners Program Updates
- SOCIETY MEMBERSHIP & BENEFITS**
15 Who Are We?
15 Large Employers Invited to Sign Up Engineers for Membership Bernie Corker, P.E., ASPE Membership Chairman
15 ASPE's 2002 Circle of Excellence Awards Program Connie Gipson, P.E., ASPE President Elect, Huntsville Chapter
- AWARDS AND RECOGNITION**
16 ACECA 2002 Engineering Excellence Awards Michael Boatfield, ACECA Public Relations Liason
16 Alabama Engineering Hall of Fame to Hold 2002 Ceremony Rodney Summerford, P.E., ASPE AEHOF Liason
17 Birmingham Chapter Member Remembered: Manley A. Roose, P.E.
- PROFILES IN EXCELLENCE**
18 NASA'S Marshall Space Flight Center Herb Shivers, PhD, P.E., Huntsville Chapter
19 An Engineer's Role In Legislature: Harry E. "Hap" Myers, P.E.
19 ASCE 150 Years of Engineering Excellence Lloyd Pitts, P.E. 150th ASCE Anniversary Chairman- Alabama
- ARTICLES OF INTEREST**
20 Front End Loading (FEL): Scope of Work Development to Contractual Stage John Allen, P.E., Huntsville Chapter
- YOU BE THE JUDGE**
21 2002 NSPE Milton F. Lunch Ethics Contest
- ASPE STATE BOARD MEETING HIGHLIGHTS**
22 State Board Meeting Minute Summary Kathryn Wilhelm, P.E., ASPE State Secretary, Mobile Chapter
23 ASPE State and Chapter Officer Directory
24 RSVP Form for attendance at the Fourth Annual Legislative Reception

This newsletter is published by Kathryn Wilhelm, P.E., ASPE State Secretary.

Comments, corrections, ads and articles for submission may be sent to kwilhelm@volkert.com. Be sure to include "Alabama Engineer" in your email "Subject" block.

State Officer Profile

2001-2002 ASPE State Treasurer - J.C. "Buzz" Vance III, P.E.

I am a Senior Mechanical Engineer with Southern Company Services, Inc. located in Birmingham, Alabama for the past 32 years. I graduated from the University of Alabama in 1970 with a Bachelor Degree in Mechanical Engineering. I currently serve as Senior Engineer for Fire Protection and assist with many mechanical engineering issues for the Edwin I Hatch Nuclear Plant located near Vidalia, Georgia. I have transported a ton of onions over the past 32 years to anyone that wanted some. I have actually calculated heat balances for power plants designed the main, hot and cold reheat piping, engineered a number of pump installations and controls. Later in my career I was in responsible charge of fire protection programs for the nuclear plants, hydro stations and fossil fueled plants both in and out of The Southern Company system. I was tested and received my Professional Engineer's License in 1982. I hold "Member Grade" in the Society of Fire Protection Engineers (SFPE); I served two years (2) as the State Treasurer for ASPE and five (5) years as the coordinator for the MATHCOUNTS program.

Twenty-five (25) years ago I married Sandra Lees of Irondale, Alabama and we have three beautiful girls, Christina Ann, Ryan Elizabeth, and Erin O'Brien. I will be polite at this point and not mention their ages. Sandy, my wife, is a realtor with RealtySouth and we live in Birmingham, Alabama.

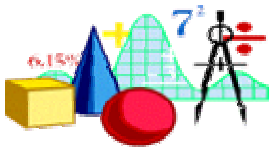
Many people want to know what I like and dislike about engineering and I must say that engineering has been good to me. I have had the unique opportunity to experience new technology through my work with nuclear plants and bulb hydro turbines. I have had to look into the future and plan nuclear fuel disposal, combustion turbine peaking units, and rejuvenation of poor performing power plants and ultimately provide a better living through science to people throughout Alabama, Georgia, Florida, and Mississippi. The good is not as sweet without the bad. So, the down side of engineering requires you to live so far into the future, one forgets the present is so dear. Family and friends often are left behind in favor of the concentration necessary to maintain creative ideas and meet production schedules.



J.C. "Buzz" Vance III, PE

As I look back over the years, I don't think I would want to change much. The projects I have had the opportunity to work with have been rewarding with great job satisfaction. My wife and children have been the best part of my journey. I only hope that the future will hold as many exciting events as I have had in the past. Life goes forward with never-ending change, never does it travel backward.

NSPE/ASPE has encouraged my willingness to promote professionalism in engineering. Meeting with other engineers that are interested in promoting our profession is rewarding. As a licensed professional I take great pride in my accomplishments. The trial of PE testing was difficult, but the victory of passing was far sweeter. After successfully completing the PE examination, I felt that I was now qualified to join the ranks of the National Society of Professional Engineers. Membership in NSPE/ASPE has encouraged me to strive for higher ground. NSPE/ASPE promotes public recognition of engineers. I feel engineers are under appreciated for their contributions to society. Not a single product or good on the market is provided without the work of a wide variety of engineering efforts.



MATHCOUNTS IN ALABAMA!

Danny Holmberg, P.E. 2002 State MathCounts Chairman

MATHCOUNTS 2002: Chapter competitions are scheduled to be held during February. Registration is down this year for an undetermined reason, perhaps proration, perhaps concern about other matters, etc.. The State Competition will be held in Montgomery on Saturday, March 16, 2002 at the Auburn University of Montgomery Campus. The AUM campus will prove to be a great choice for the State competition, providing an easy to find location just off I-85 and fairly conveniently located to lots of motels on the Eastern Boulevard. Montgomery Mayor Bobby Bright has been scheduled to kick off the competition with a brief welcome message. Governor Don Siegleman has been invited to present awards at the end of the competition, but we have not received confirmation from his scheduling staff. The Montgomery Chapter of ASPE is excited about hosting the competition this year and invite any who wish to attend or assist to contact Danny Holmberg, P.E. (334.206.1626 or dholmber@mwwssb.com), State Coordinator and make plans to participate.

National / State News

NSPE INITIATIVES FOR 2002

NSPE President Daniel Clinton, P.E.

With the New Year underway, I have been asked to share with you what I see for the Society's future. I am writing this article as we prepare for the Consensus Congress in Washington, D.C. and the outcome of that consensus will direct our strategic planning for the next three years. As we all recognize, the events of September 11 have changed the society in which we live. The roles that engineers play in the health and safety, security, and infrastructure integrity are at the forefront. I am confident that the engineering community will respond to this challenge.

One of the highlights of this challenge was the creation of the U.S. Agency Advisory Group, a forum to exchange with NSPE leadership the views on professional issues among government executives whose agencies have an engineering mission. The group first met at NSPE headquarters on September 14 in the aftermath of September 11. Through this meeting NSPE acted as a catalyst, bringing many of these agencies together for the first time, and they plan now to meet twice a year. As a result of the discussion at this meeting, the U.S. Army Corps of Engineers initiated The Infrastructure Security Partnership, a group including NSPE, other technical and professional societies, and federal agencies. The TISP plans to issue a report at a conference in the Fall of 2002.

As I travel around the country, I continually find more enthusiasm and support for NSPE and the things we are doing. I am pleased to report that at year-end the total number of members and licensed members has increased to 58,000. I am also encouraged that Alabama SPE has begun to implement its membership initiative. NSPE pledges to provide support to those states that have no or limited staff support to make the membership initiative provide positive results. But it is still everyone's responsibility to promote NSPE to associates and to help recruit new members.

As we approach Engineers Week, I encourage you to look at how you can enhance these programs within your local areas. This year E Week is introducing a new program, "Zoom Into Engineering," designed to help kids in elementary schools learn the excitement of engineering. "Zoom Into Engineering" is an excellent complement to "Introduce a Girl to Engineering," slated for February 21. This program was initiated by NSPE last year to deliver a positive message about math, science and engineering to K-12 girls.

At the same time MATHCOUNTS stands at a crossroads. The MATHCOUNTS board has reaffirmed its decision to take MATHCOUNTS "on the road" to gain more visibility for the program and to attract other potential national sponsors that may be interested in bringing the program to their communities. While student participation has increased by nearly 1900 this year, the number of participating schools of 5,857 is slightly down from last year. On the upside, however, three states reported increases of 15 or more schools over last year. Even with these increases, it will be important for MATHCOUNTS to attract participation from inner cities and rural areas. The MATHCOUNTS board has developed a strategy to accomplish this and will need the support of the state societies for its implementation.

I look forward to seeing you in Point Clear this summer.

NSPE 2002 Winter Meeting Update

The NSPE 2002 Winter Meeting, held January 17-22, 2002 in Washington D.C., included a Leadership Development session where state leaders can build their leadership and management skills; the NSPE Consensus Congress where NSPE discussed key strategic issues and refreshed the strategic plan; and NSPE's "PE Day on Capitol Hill" brought the engineer point of view to your representatives and senators. NSPE state presidents, presidents-elect, and executives (and NSPE committee/task force chairs who wish to sit in) took part in the consultant-led leadership development session; NSPE state and national leaders, committee/task force chairs, and general members participated in the consultant-led Consensus Congress.

The Engineering Societies of Alabama, Louisiana and Arkansas Invite You To The Marriott Grand Hotel, Point Clear, Alabama

ASPE is proud to host this year's **Tri-State Engineering Society Meeting**. Make plans now to attend the annual Tri-State Engineering Society Meeting, scheduled for **June 30 -July 3, 2002**, at the Grand Hotel in Point Clear, Alabama. Room rates will be \$139 for resort view, \$159 for bay view. For more information on becoming a meeting sponsor, exhibitor, or speaker contact **Connie Gipson, P.E.**, Annual Meeting Committee Chairman at (256) 885-7786. Visit the ASPE website for registration information and for seminar topics at www.aspe-al.com. You may also wish to view the Marriott venue by logging on to www.marriott.com/PTLAL

National / State News

SEE YOU IN ORLANDO!

The NSPE 2002 Convention/Expo theme is "Leadership" with a specific focus on "Mentoring." Engineers looking to enhance their leadership skills and build career opportunities will want to mark their calendars for July 11-13, 2002, and experience new reasons to attend... All new convention/expo format, Enhanced learning opportunities, Three Career Tracks (new, mid-career, and executive-level), Top-notch speakers, Behind-the-scenes educational tours (only offered to convention attendees),



Networking for success! Start making plans **today** to join other engineering professionals and to bring your family to the Walt Disney World Coronado Springs Resort Hotel, July 11-13, 2002! Stay tuned to www.nspe.org and *Engineering Times* for upcoming details about the NSPE 2002 Convention/Expo.

Governor Siegelman's Engineer's Week Proclamation

Whereas, engineers across Alabama prepare to observe the 51st anniversary of National Engineers Week and to reflect on the last half century of innovation and look ahead to the global network unfolding before us; and

Whereas, engineers have used their scientific and technical expertise in creative and innovative ways to fulfill society's needs; and

Whereas, engineers face the major technological challenges of our time - from rebuilding towns, and roads & bridges that are devastated by natural disasters; to working with Homeland Security officials in the aftermath of the September 11th terrorist attack against our country to protect and rebuild our domestic infrastructure; and

Whereas, engineers are encouraging our young math and science students to realize the practical application of their knowledge and skills to meet the challenges of the future:

Now Therefore, I, Don Siegelman, Governor of the State of Alabama, do hereby proclaim February 17 through February 23, 2002, as

National Engineers' Week

in the State of Alabama.

LEGISLATIVE UPDATE

ASPE Legislative Affairs Committee - Hack Sain, P.E.

Tom Coker, our lobbyist, has been retained to help in the unification effort among all Engineers. Plans are being made to get maximum exposure of Tom Coker to the engineering community. If specific legislation is introduced, Tom Coker will be retained for lobbying help. This cost will be in range of \$75,000 upwards. A two-prong approach will be made to influence legislation and get the engineers position known to legislators. The first will be from a lobbying effort headed by Tom Coker. The second will be from a grass roots effort by direct contact from engineers known by local legislators.

On Thursday, December 6, 2001, Hack Sain, P.E. appeared before The Alabama Association of County Commissioners in Huntsville seeking help from County Engineers to help in grass root efforts with Legislators. County Engineers meet separately and voted to head up the grass roots efforts. We are to advise County Engineers when legislation has been introduced and furnish them with talking points so the position of the engineering community can be conveyed to the appropriate legislator by a local commitment. Frank Courson, P.E., Bureau of County Transportation, ALDOT, made Sain's appearance before County Engineers possible. Frank is head of Bureau. We owe Frank a debt of gratitude.

For special session of legislature Senator Bill Armistead of Columbiana, Shelby County introduced SB58. This bill requires all professional services furnished to State of Alabama to be based upon the lowest bid. Since initial reading and assignment to Finance & Taxation General Fund Committee no movement has been taken. Bill is expected to die in special session but will be reintroduced in regular session of 2002.

There is an ASCE State Meeting scheduled in Huntsville to discuss this very legislation on April 18-19, 2002. It is recommended that ASPE host a roundtable discussion about this legislation at that conference.

ASPE Around The State

ASPE Birmingham Chapter News

Darren Hamrick, P.E.

Past Programs:

In December the ASPE Birmingham Chapter jointly hosted a Holiday Social at the Riverchase Country Club with ECOB.

The January ASPE Birmingham Chapter meeting was held at Inverness Country Club. Mr. Glen Bishop, a structural engineer and partner with the Lane, Bishop, York, Delahay engineering firm spoke on the implications of licensure by discipline of structural engineers.

Upcoming Programs & Special Events:

February 9, 2002, 8:30 am Birmingham Regional MATHCOUNTS Competition will be held at the Southern Company Services, Building 42. Registration in main lobby area, competition in the downstairs cafeteria area.

February 21, 2002, 6:00 pm Engineering Council Of Birmingham (ECOB) Banquet will be held at The Club, Atop Red Mountain, Birmingham. Elmer B. Harris, chairman and chief executive officer of Alabama Power Company will be honored at this year's banquet. He holds Bachelors and Master's degrees in Electrical Engineering and a Master's degree in Business Administration, all from Auburn University. He is a graduate of the United States Air Force Flight School, as well as Air Command and Staff College and the Air War College. Harris joined Alabama Power in 1958 while in college and has held various positions of increasing responsibility. He became senior vice president in 1978, and a year later the Board of Directors elected him executive vice president and chief financial officer of Alabama Power.



Elmer B. Harris

March 14, 2002, 11:30 am, Chapter Meeting, Inverness Country Club, Speaker: Dr Stephen Jones, PhD, will speak about- Hydrogen Fuel Cell Busses

March 29, 2002, Golf Tournament

May 17, 2002, Year End Banquet – Evening Event

ASPE Huntsville Chapter News

Alvin Crawford, P.E.

Past Programs:

At the December Chapter meeting, noted atmospheric scientist, Dr. Don Perkey, spoke on: "Assessing the Impact of Precipitation Variability on Crop Yields in Alabama".Very Interesting!

ASPE-Huntsville Chapter offered its fall Engineering Scholarship that is available for Huntsville ABET Engineering University students. The scholarship was awarded to Amanda Montoya, a UAH Computer Engineering student. The award is named the August S. Ries, Jr. P.E, Memorial Scholarship Award, in honor of Mr. Ries, a past ASPE-Huntsville Chapter member.

The January 8th Huntsville Chapter lunch meeting (room 127, University Center, University of Alabama at Huntsville) featured speaker was UAH research scientist, Dr. Mike Eley who spoke on "Volume Reduction and Recycling of Municipal Solid Waste". ...Very Innovative!

Upcoming Programs & Special Events:

February 9, 2002, 7:30 am Huntsville Regional MATHCOUNTS Competition will be held at a location in Huntsville that is yet to be determined.

February 22, 2002, 6:00 pm E-Week Awards Banquet will be held at the Huntsville Marriott Hotel. Approximately 18 Huntsville area engineering societies and organizations will present awards to their respective members at the banquet. ASPE will also present awards and recognize the Huntsville Regional **MATHCOUNTS** winners. E Week Activities will be hosted jointly by ASCE-Huntsville and ASPE-Huntsville.

March 12, 2002, Chapter Meeting: Field Trip to Huntsville's Vulcan Materials limestone quarry operation.

ASPE Around The State

ASPE Mobile Chapter News

Drew Dyas, P.E.

Past Programs:

The December ASPE Mobile Chapter meeting was held in the Officers' Mess Hall aboard the USS Alabama. Mobile Chapter President, David Webber, PE started the meeting and initiated self-introduction of all attendees. Over 42 individuals representing ASPE, ASCE, ASME and IEEE were in attendance at this joint meeting. Dr. M. Dayne Aldridge, Dean of Engineering for Mercer University and ABET committee member, gave the audience an excellent overview of the ABET accreditation process. Dr. Aldridge discussed how ABET determines what content is necessary in an engineering curriculum for it to receive accreditation. He suggested that to a significant extent the process is industry-driven. On completion, David Webber briefly reminded everyone in attendance of upcoming events and of ASPE's intent to be an umbrella organization for the area engineering technical societies.

The January ASPE Mobile Chapter meeting was held at Skyline Country Club. Mr. Kirk Shaw, an attorney with the Armbrecht, Jackson, DeMouy, Crowe Law Firm spoke on personnel issues.

Upcoming Programs & Special Events:

February 16, 2002, Noon till 4:00 pm **Mobile Regional MATHCOUNTS Competition**, will be held at Mobile Gas Service Company. Fifteen area schools are officially registered with the **MATHCOUNTS** Foundation for this year's ASPE Mobile Chapter **MATHCOUNTS** competition. It also looks like we may be set as far as available volunteers, pending confirmation of a few. Again, please inquire if your company would be willing and able to donate/sponsor awards for the top students at the chapter and state competitions. Also, please consider that further help will be needed to conduct the daylong state competition, to be held in Montgomery. Please, if you are willing and able to help with any aspect of this year's **MATHCOUNTS** program (at the local or state competition or at individual schools as a coach), contact the 2002 Mobile **MATHCOUNTS** Coordinator, Drew Dyas, P.E. wk: (251) 621-9009, hm: (251) 621-3508 or e-mail: ddyas@dymasusa.com. Thanks to those of you who are already on board.

February 22, 2002, 7:00 p.m. **Mobile Area Council of Engineers (MACE) Banquet** will be held at the Radisson Admiral Semmes Hotel 251 Government Blvd., Mobile: ASPE and MACE will recognize area engineers and This year's banquet speaker will be Jon M. Kriegel, ASME Distinguished Lecturer on Chandra X-Ray Observatory. Social hour will start at 6:00 p.m. and dinner will be served at 7:00 p.m. Mr. Kriegel has 25 years of Design Engineering experience, working for several blue-chip corporations including the last 15 years at Eastman Kodak. He holds 5 U.S. Patents and has contributed to the design of business products from copiers to ink-jet printers, and to the Chandra Telescope. Kodak is under contract to design, assemble, and test the optics for this orbiting satellite telescope, which will follow the Hubble Space Telescope in the NASA Series called "The Great Observatories". This X-Ray telescope was launched in July 1999 and will collect image information in the high-energy range. Concerned about America's loss of technical competence, Mr. Kriegel has been a player in several local and national programs, focused on improving the delivery of Mathematics and Science, to students of all ages. In fact, it is his desire to share the technical advances that occurred in designing the Chandra, X-Ray telescope, which led to the creation of this technical presentation. Mr. Kriegel's presentation is said to be entertaining to both technically and non-technically oriented audiences. Please plan to come.

March 6, 2002, Chapter Meeting Time & Location TBD, Speaker: Mr. Robert Green, P.E., Undergraduate Coordinator at Mississippi State University. Mr. Green will discuss ethics for engineers.

April 3, 2002, 12:00 p.m. **Chapter Meeting** at Skyline Country Club: Speaker: Mr. Lynn Doyle, Alabama Board of Registration. Mr. Doyle will discuss items affecting registration in Alabama and common claims against engineers that the Board receives.

May 1, 2002, 12:00 p.m. **Chapter Meeting** at Skyline Country Club: Speaker: TBD on topic of Liability Insurance.

ASPE Around The State

ASPE Montgomery Chapter News

Kevin Blake, P.E.

Past Programs:

The Montgomery Chapter for many years has worked closely with Auburn University at Montgomery to identify and select a Pre-Engineering student to receive a scholarship from the Chapter. This past Fall the Montgomery Chapter of ASPE awarded a \$500.00 scholarship to Robert Bowden, son of ASPE member Locke D. "Bubba" Bowden, Traffic Engineer for the City of Montgomery's Traffic Engineering Department. Robert is a freshman enrolled in Pre-Engineering at Auburn University at Montgomery working his way through college, with his parent's help, as an employee of 'Buck Masters'. Congratulations Rob, and keep up the hard work. Congratulations to Bubba as well.

Mr. Buzz Powell with the National Center for Asphalt Technology (NCAT) at Auburn University gave a presentation on the new NCAT Test Track facility located just outside of Auburn in Lee County was the featured speaker at the November 7th chapter meeting. Funding for construction of the 1.7-mile oval facility, which has been built on 309 acres of land purchased by Auburn University, was provided by the Alabama Department of Transportation (ALDOT). The facility includes a state of the art asphalt laboratory, a truck maintenance facility and an onsite asphalt plant for producing the experimental mixes placed on the track. Nine state DOT's and the FHWA sponsor test sections along the track. Traffic loading is provided by a team of tractor trailers that run six days a week. Each Monday, the truck stop and NCAT personnel collect data along the track. Additional info can be found at www.pavetrack.com.

The annual Christmas Party was held on December 6 at the Capital City Club atop the RSA Tower. About 31 couples attended and a good time of fellowship, food and prizes was enjoyed by all.

Upcoming Programs & Special Events:

February 6, 2002, 11:15 am, **Chapter Meeting**, Farmer's Market Cafe at 315 N. McDonough Street, Speaker: Tom Coker, recently retained State Legislative lobby for JECA, will be our speaker at the Montgomery Chapter monthly meeting. An important note in which other Chapter members may be interested, on Wednesday, February 6 at the. Our meeting begins at 11:30 AM with a trip through the buffet line and business usually starts a few minutes before noon, with speaker following. Anyone wishing to attend is welcome, but please notify Greg Gillian, Kevin Blake or Danny Holmberg in order for us to make additional arrangements if necessary. Please plan to attend and support your profession.

February 16, 2002 Montgomery Chapter Regional MATHCOUNTS Competition, will be held at will be held at the Student Activities Building on the campus of Auburn University at Montgomery (AUM). To date only two Montgomery area schools have officially registered with the **MATHCOUNTS** Foundation for this year's ASPE Montgomery Chapter **MATHCOUNTS** competition according **MATHCOUNTS** Coordinator Danny Holmberg, P.E.. The Auburn Chapter may combine with the Montgomery Chapter for this year's competition.

February 19, 2002, 12 noon, **Annual E-Week Luncheon** will be held at the Capitol City Club (RSA Tower) in downtown Montgomery. The Montgomery Chapter of ASPE has assisted ACECA with the planning of the luncheon and Engineering Excellence Awards Ceremony. Please plan to attend and support your profession.

March 16, 2002, the Montgomery ASPE Chapter will host the **Alabama State MATHCOUNTS Competition**, to be held at the Student Activities Building on the campus of Auburn University at Montgomery (AUM). Also, please consider that further help will be needed to conduct the daylong state competition. Please, if you are willing and able to help with any aspect of this year's **MATHCOUNTS** program (at the local or state competition), contact the 2002 State **MATHCOUNTS** Coordinator, Danny Holmberg, P.E. at (334) 206-1626 or e-mail dholmber@mwwssb.com. Thanks to those of you who are already on board.

The Montgomery Chapter of ASPE has awarded its annual scholarship to one of their own member's son going to AUM.

ASPE Around The State

ASPE Muscle Shoals Chapter News

J. D. "Don" Lokey, P.E.

Past Programs:

The December ASPE Muscle Shoals Chapter luncheon meeting featured the second of four videos in the Learning Channel "Collapse" series entitled "Extreme Force". Approximately 18 engineers attended the December meeting, including 3 first-time attendees. The January meeting was held in the evening at Logan's Restaurant in Florence on 15th. Andy Beck of FLIR Systems gave a presentation on "Infrared Technology and Applications such as Predictive Maintenance."

Upcoming Programs & Special Events:

February 16, 2002, Muscle Shoals Regional MATHCOUNTS Competition: will be held at the University of North Alabama. The Muscle Shoals Chapter will award \$100 to Math department of school whose team wins chapter competition and a \$50 savings bond to highest-ranked individual at chapter **MATHCOUNTS**.

February 19, 2002, luncheon Chapter Meeting will feature the third of four videos in the Learning Channel "Collapse" series.

March 19, 2002, evening Chapter Meeting is scheduled to be held at Logan's Restaurant in Florence. The speaker and topic have not yet been finalized.

April 16, 2002, luncheon Chapter Meeting will be held in Muscle Shoals. This meeting will feature the fourth and final video of the Learning Channel "Collapse" series.

May 21, 2002, evening Chapter Meeting is scheduled to be held at Logan's Restaurant in Florence. The speaker and topic have not yet been finalized.

ASPE Northeast Chapter News

Kenneth Roy, P.E.

Ken Roy noted that Chapter President, Randy Whorton has recently finished his moving transition. Therefore in February Ken and Randy will meet and organize planned activities for the Northeast Chapter members.

ASPE Tuscaloosa Chapter News

Steve Nelko, P.E.

Upcoming Programs & Special Events:

February 16, 2002, 7:30 am – 1: 00 pm, West Alabama Regional MATHCOUNTS Competition will be held at H.M. Comer Hall at the University of Alabama. This year we have another good turnout - four schools and 18 mathletes competing. We need volunteers for scoring, proctoring, and a master of ceremonies. Someone needs to step up and coordinate the refreshments. Beth Todd is going to see about student help. It would be great to have another large turnout of enthusiastic folks like we had last year. If you need further information, contact me at 562-1434, or snelko@tsteel.com.

February 19, 2002, 6:30 pm, Engineer's Week Banquet at the University Club. Social Hour will begin at 6:30 pm. You and your significant other are cordially invited. More information on cost, menu and speaker will be forthcoming.

ASPE BIRMINGHAM CHAPTER MEMBER REMEMBERED



Manley A. Roose, P.E. of Vestavia Hills, AL passed away on Saturday, December 1, 2001 at the age of 89. He had been very active in the Birmingham chapters of ASPE and ASCE. Mr. Roose was the past president of the Downtown Optimist Club. Mr. Roose graduated from the University of Iowa in 1936 with a BS in Civil Engineering. He retired from Rust Engineering in Birmingham in 1980 after 28 years of service. Prior to joining Rust in 1952, he was employed by the TVA, then by Southern Railway Systems in the bridge department in Washington DC, and retired from Rust Engineering. He is survived by his wife, Vivian of 64 years; daughter, Sarah DeMonbrun of Ft Walton Beach, FL; sons, Allyn of Charlotte NC, and Ted of Hoover AL; six grandchildren and three great grandchildren. Mr. Roose will be missed by the entire Alabama engineering community.

2002 – 2003 State Officer Candidate Biographies

Charles "Hack" Sain – Candidate for ASPE President-Elect

Charles Sain, better known as "Hack", earned a Bachelor's Degree in Civil Engineering from the University of Florida and is a registered Professional Engineer in 15 states. He is also an active member of the American Society of Civil Engineers and the Alabama Society of Professional Engineers.

Hack's engineering career began early in World War II as a Lieutenant conducting engineering training for infantryman preparing for overseas deployment. Later, he served as an Engineer officer in the Third U.S. Army, from the invasion of Europe in 1944 to the surrender of Germany. His tattered army boots sit on a shelf in his office to this day, as a reminder.

Since his World War II days, Hack has become one of the most successful engineers in the Southeast, winning several awards and continuing to reach career milestones. In 1969, Hack started his own consulting engineering firm, Charles H. Sain Associates which today is known as Sain Associates, Inc.

In addition to his professional success is Hack's personal success. Hack is a family man (he has 3 grown children and is married) and is an active member at Vestavia Hills Baptist Church.

Kathryn Wilhelm, P.E. – Candidate for ASPE State Secretary

Kathryn Wilhelm earned a Bachelor's Degree in Mechanical Engineering from Wichita State University and is a registered Professional Engineer in 6 states. She is also an active member of the American Society of Mechanical Engineers and the Alabama Society of Professional Engineers.

Kathryn's engineering career began early in 1982 as a Fluid Systems Engineer for Kansas Gas & Electric Company's Nuclear Plant Engineering Department. In 1990, Kathryn moved to Alabama became a consulting engineer with several design firms (Brown & Root, Braun/Halliburton and Herzog Hart/CDI Corp) specializing in process/mechanical/environmental engineering projects in the specialty chemical, refinery and pharmaceutical industries. In 1999 she joined Volkert and Associates, Inc. as a project manager in the utilities division managing municipal water and wastewater projects. In 2001, Kathryn was selected as the Mobile Area Mechanical Engineer of the Year. Kathryn has held the positions of secretary, vice president and president of the Mobile Gulf Coast Section of the American Society of Mechanical Engineers and currently serves on the executive board as the Chairman of Engineering Ethics and Professional Development. Kathryn has served as the secretary, vice president, president, state director of the Mobile Chapter of ASPE, ASPE State Vice President – South, and currently serves as the ASPE State Secretary. Last year, Kathryn served as the Annual Meeting Chairman for the Tri-State Engineering Society's Meeting.

In addition to her professional success is Kathryn's personal success. Kathryn has been married for over 19 years to Andrew J. Wilhelm and has two daughters, Carolyn and Margaret. Kathryn has been a proud supporter of athletics at McGill Toolen Catholic High School in the fastpitch and soccer programs. Kathryn is an active member at Saint Dominics Catholic Church.

Kevin Meyer, P.E. – Candidate for ASPE Vice President-North

Mr. Meyer graduated from Lehigh University (Bethlehem, PA) in October 1977 with a BSCE in water and wastewater treatment. He spent two years in Wisconsin where he passed the EIT and PE exams in November 1979. He returned to his native New Jersey and began his career with the US Army performing energy conservation and environmental protection duties at Picatinny Arsenal in Dover, NJ. Following a family (farm) lead, he located to the south and began his tenure with the Redstone Arsenal Directorate of Public Works. In his 19-year career with the Government, he has spent time in every aspect of Public Works Administration. Mr. Meyer's self-initiated concern for utilities infrastructure renewal now has him achieving needed improvements through the privatization process.

He has a delightful wife, Cheri, and a total blended family count of five children, ranging in age from 17 to 27 years of age.

Joe Leamon, P.E. – Candidate for ASPE Vice President-Central

Joseph L. "Joe" Leamon earned a Bachelor of Science Degree in Civil Engineering from the University of Alabama in 1967 and is a registered Professional Engineer in Alabama since 1974. He has been an active member of the National Society of Professional Engineers (NSPE) since 1990. Joe has served the Birmingham Chapter of ASPE as Treasurer, 1997-98; Secretary, 1998-99; Vice President, 1999-2000; and President, 2000-01.

Joe's engineering career began with Chicago Bridge and Iron Company working on southeastern field-erected nuclear containment vessels. He later worked as a mechanical design engineer and nuclear quality assurance engineer on approximately 30 shop-fabricated nuclear reactor vessels in the Birmingham manufacturing facility. Before leaving CB&I, he was the sub-contract administrator for nuclear fuel reprocessing vessels at Barnwell, SC and performed site surveying and acceptance of excavation, foundations, roads and pile driving associated with construction of CB&I's new grassroots fabrication facility in Pascagoula, MS.

More recently, Joe has been employed by the Southern Company in design quality assurance and currently with Southern Nuclear where he is project lead for licensing issues associated with decommissioning, radwaste, groundwater monitoring, and settlement monitoring.

Joe, a family man with two grown sons and three grandchildren, is an avid skier and currently serves the Birmingham Ski Club on the Board of Directors.

Danny Holmberg, P.E. – Candidate for ASPE Vice President-South

Roy D. (Danny) Holmberg, PE, received a BS degree in Agricultural Engineering in 1980 and a Master of Science degree in Sanitary Engineering in 1987, both from Auburn University. He began work at the Water Works and Sanitary Sewer Board of the City of Montgomery in 1982 as a Graduate Engineer, later as Chief Engineer, and since 1990 as the Board's Assistant General Manager. His work has included the development of a progressive rehabilitation, a CCTV inspection program, selection and development of repair, replacement or rehabilitation programs, etc. Currently he is focusing attention on facilities management, regulatory requirements, and infrastructure capital asset management.

Mr. Holmberg is a member of ASCE, AWWA, and is active on the Water Environment Federation's Collection System Committee. He is a past officer of the Montgomery Chapter of ASPE, and is active now as a MathCounts Chapter Coordinator and Membership Chairman.

Cast Your Ballot

Alabama Society of Professional Engineers

OFFICIAL BALLOT For 2002-2003 Officers

Instructions: Mark ballot and postmark by April 15, 2002.
Space is provided on the ballot for write-ins.

Please write "BALLOT" and SIGN YOUR NAME on the front of your return envelope.

For President-Elect: _____ Charles H. ("Hack") Sain, PE, Birmingham

For Vice-President: (Vote for 3) _____ (North) Kevin Meyer, PE, Huntsville

_____ (Central) Joe Leamon, PE, Birmingham

_____ (South) Danny Holmberg, PE, Montgomery

For Secretary: (Vote for 1) _____ Kathryn Wilhelm, PE, Mobile

**All PE, LS, and Associate Members are eligible to vote for officers.
In order to be counted, the ballot must be postmarked no later than April 15, 2002.**

Please indicate whether you are: _____ PE _____ LS _____ EI

Mail ballots by 4-15-02 to:

ASPE Nominating Committee
Alabama Society of Professional Engineers
1075 13th Street South
Suite 312
Birmingham AL 35294-4440

Engineering Education In Alabama

University of South Alabama College of Engineering

Barbara Wooley, Assistant to the Dean

Established in October 1963, the University of South Alabama College of Engineering has provided a quality education for prospective engineers from around the state, the southeast, and internationally. The college offers five accredited programs with undergraduate degrees in chemical, civil, electrical, computer and mechanical engineering and graduate degrees in chemical, electrical and mechanical engineering. Our mission is to provide students with quality, accessible undergraduate and graduate engineering education, to prepare graduates for professional careers and life-long learning, to promote the creation and dissemination of knowledge, to serve society through professional practice and community outreach and to act as a catalyst for economic and technological development of the Gulf Coast region, the State of Alabama and the Nation.

USA Computer Engineering Program Receives Initial Accreditation

Following an on-site accreditation visit in October 1999, the College of Engineering's newest and fastest growing program, Computer Engineering, received its initial accreditation from the Accreditation Board for Engineering and Technology (ABET). This accreditation is retroactive for individuals who graduated after October 1, 1998.

Dr. Mohammad Alam Joins the Engineering Team

Dr. Mohammad Alam joined the College of Engineering on May 15, 2001 as Chair and Professor of Electrical and Computer Engineering. Dr. Alam holds the Ph.D. in Electrical Engineering from the University of Dayton, Dayton, Ohio (1992), a M.S. in Computer Engineering from Wayne State University in Detroit, Michigan (1989) and a M.S. and B.S. in Electrical and Electronic Engineering from Bangladesh University of Engineering and Technology (1985 and 1983 respectively). Before joining the University of South Alabama, Dr. Alam was on the faculty at Purdue University – Fort Wayne, Indiana from August 1992 through June 1999 and at the University of Alabama from July 1999 until arriving at USA. Dr. Alam also served as a graduate faculty member of Indiana University during his tenure at Purdue University – Fort Wayne.

Dr. Alam brings with him an extensive research portfolio and lists among his research interests ultra fast computer architectures and algorithms, digital/optical image processing, pattern recognition, fiber-optic sensors, infrared imaging systems, optical fiber communication systems, interconnection networks, ATM, modeling and performance analysis, microprocessor applications and digital system design. His research work has been supported by federal agencies such as the National Science Foundation, Federal Aviation Administration, Air Force Office of Scientific Research, and Wright Patterson Air Force Base as well as by industry such as ITT Aerospace/Communications.

Dr. Alam's immediate goals for the ECpE Department include:

- Review and upgrade the existing BSEE and BSCpE curriculum to ensure the best learning experience for our students.
- Upgrade the instructional laboratories with state-of-the art equipment.
- Strengthen the graduate program and provide additional support in the form of research/teaching assistantships to attract the best graduate students.
- Enhance funded research activity and faculty scholarship.
- Gradual transition from a predominantly teaching department to a research-oriented department without sacrificing the quality of teaching.

Wireless Technology Comes to the College

The College of Engineering recently completed installation of a wireless network for personal computers in all of the College's buildings. The project provides all personal computer users with a wireless network connection inside and outside engineering buildings, allowing communication between multiple computers, without cables, added phone lines or networking hardware. Faculty, students and staff in or near the college's buildings may browse the internet, check e-mail, and access engineering application software from the college's server, without the need to plug into an outlet. A person on a wireless-enabled notebook or desktop computer may now use network resources from a variety of locations.

College buildings currently wired for the technology include the Engineering Classroom Building, Engineering Laboratory Building and the Electrical and Computer Engineering Building. Students doing research in the Laboratory Building may move to the Classroom Building without having to be near an Ethernet port or disconnect from the Internet. Being able to walk around without wires permits "untethered computing".

For more information about the USA and the College of Engineering, visit our website at www.usouthal.edu.

Engineering Licensure Issues

RECENT POLICY CHANGES BY THE BOARD OF LICENSURE FOR PE AND PLS

Regina Dinger, Executive Director

The Board of Licensure is charged with carrying out the laws of the State of Alabama, in particular the section of the Code of Alabama, 1975 which creates the Licensure Board and outlines the responsibilities of the Board. The Licensure Law is changed through the passage of legislation.

The law tasks the Board to develop policies and procedures that support the Licensure Law. The Administrative Code, which includes the Code of Ethics, is the document that sets forth those policies. The Board with approval of a legislative oversight committee updates the Administrative Code. These changes can be done at any time the Board determines is necessary.

Recently the Board made three changes to the Administrative Code and are looking to make more. The most recent changes all deal with the application process. Based on inputs from applicants and concerns identified by the Board staff, the procedures for filing a new application after a previous application has been closed has been changed. The requirements for additional education and a year wait before retaking the examination have been deleted. Upon application, all approved candidates will be granted four attempts at the particular examination for which they applied. If they are not successful after those four attempts, they must file a new application. The Board will review the new application and if approved the applicant will be granted an additional four attempts. Applicants will no longer be allowed to review failed exams. Since the exams have gone to a multiple choice format and a synopsis of questions missed is being provided to the applicant, it was felt that a formal review of the exam would provided no additional benefit. The last applicants that will be allowed to review exams are those that took the October 2001 tests.

It is anticipated that at the February 2002 Board meeting additional changes to the Administrative Code will be discussed. These include recognizing a master's degree in engineering as a qualifying degree for licensure, the acceptance of electronic signatures (if a licensure law change is not required) and the possible changing of the references to the Minimum Technical Standards as developed by the Alabama Society of Professional Land Surveyors. ASPLS is currently adopting new standards that will be called Standards for Practice of Surveying in the State of Alabama instead referring to the standards as minimum standards.

With the 2002 Legislative session already underway and at least one bill being introduced that directly affects the Licensure Law, additional changes to the Administrative Code may be forth with. A bill has been introduced that proposed to change the practice of engineering definition. This bill, similar to the one that was introduced last year, will delete the requirement for faculty who teach upper level engineering and design courses to be licensed. Other legislation continues to be introduced that outlines the processes for state agencies to use when issuing contracts. These include the requirement for all contracts to be bid.

The Board staff will continue to monitor all legislation and will make comments to the Legislature and Governor when it is appropriate.

If you need our assistance, please don't hesitate to contact us at 334-242-5568.

~~~~~

*The Joint Engineers Council of Alabama (JECA) cordially invites you to attend  
the Fourth Annual Engineers' Legislative Reception  
On Tuesday, February 19, 2002 at Five O'Clock in the Evening  
At the RSA Plaza Terrace  
770 Washington Avenue, Sixth Floor  
Montgomery, Alabama*

**RSUP appreciated, not required**

**Please see page 24 in this newsletter for RSUP form and information**

~~~~~

Sustaining Partners

2001-2002 ASPE Sustaining Partners



Help Support ASPE By Joining Our Team

ASPE is asking you to become a member of our ASPE Sustaining Partners Program this year and in the years to come. This is a unique opportunity for your organization to actively support the interests of the society through sustained financial support. ASPE has 9 local chapters who meet monthly and actively sponsor regional MathCounts competitions, recognize local excellence in engineering through annual awards programs, sponsor engineering scholarships and support various engineer's week activities within your communities. By teaming with ASPE, your organization can actively support excellence in the practice of engineering, engineering education, and further encourage the transfer of

technology and spread the word to the public at large about the contributions of engineers. ASPE is consolidating the fund raising drives at both the local and state levels through the use of the sustaining partner program. This funding campaign will allow the chapter to focus on the concerns of the local communities and become more responsive to the member and other concerned engineering professionals throughout the state. There are seven distinct categories for your consideration (Cash Contribution or Value of Gifts in Kind): **Sustaining Partners:** Platinum (\$1,000 or More), Gold (\$750), Silver (\$ 500), Bronze (\$250); **Friends of the Society:** Red Feather(\$100) Blue Feather(\$50). Partners of the society will have the added benefit a direct downlink from our ASPE Website. All contributors will be listed in the Alabama Engineer. Please consider becoming a sustaining partner at either the local or state level by contacting: Pat Christians, Executive Director of Alabama Society of Professional Engineers, 1075 13th Street South, Suite 312, Birmingham, AL 35294-4440. Feel free to visit our website www.aspe-al.com or contact any of our State Officers or Local Chapter Presidents for more information.

The current ASPE Sustaining Partners for 2001-2002 are:



Sustaining Partners: (Italics indicate that this company is a state partner in addition to being a local chapter partner)

- Platinum: Birmingham: *UAB School of Engineering*
- Mobile: *Volkert & Associates, Inc.* *Prism Systems, Inc.*
- Silver: Muscle Shoals: Tennessee Valley Authority
- Bronze: Mobile: Mobile Gas Service Corporation Blue Cross Blue Shield of Alabama
 ASME—Mobile Gulf Coast Section ASCE—Mobile Branch
 Ciba Specialty Chemicals QMS/Minolta
 Bender Shipbuilding and Repair Company, Inc.

Friends of the Society: (Italics indicate that this company is a state friend in addition to being a local chapter friend)

- Red Feather: Mobile: BE&K Engineering Ineos Phenol, Inc.
- Montgomery: *Sherman International Corp* *Environmental Materials Consultants, Inc.*
- Blue Feather: Montgomery: Alabama Gas Corporation Associated Mechanical Contractors (AMCO)
 Goodwyn Mills & Cawood H. Kenneth White & Associates, Inc.
Sanford-Bell & Associates Professional Engineering Consultants, Inc.
 Christian Testing Labs Alabama Graphics and Engineering Supply, Inc
 Jarvis & Associates, Inc. Sherlock Smith & Adams, Inc.
 JM Garrett & Son, LLC Larry Speaks and Associates, Inc.
Capital Refrigeration Co. Southland Professional Engineers
 Bradley Plumbing & Heating Scientific Engineering, Inc.
 Alabama Municipal & Environmental Engineers, Inc.

Society Membership & Benefits

WHO ARE WE?

The Alabama Society of Professional Engineers (ASPE), founded in 1951, is a state organization of engineering professionals from all disciplines that promotes the ethical and competent practice of engineering. Through its nine local chapters, ASPE, not only represents its members, but all ABET accredited engineering graduates from all disciplines throughout the State of Alabama. Promoting the value of the Professional Engineer (PE) license and enhancing the engineering profession have been top priorities at ASPE for more than 50 years. Supporting sound licensure laws helps to protect the public's health, safety, and welfare by ensuring that those who earn a PE license have met education, examination, and experience requirements. ASPE is also a leader in promoting ethical standards. NSPE's Code of Ethics for Engineers has been time-tested as the standard by which engineers measure ethical performance of professional duties. ASPE recognizes the importance of setting high professional standards and promoting values, principles, ethics, and best practices that maintain respect for the engineering and design profession.

LARGE EMPLOYERS INVITED TO SIGN UP ENGINEERS FOR ASPE MEMBERSHIP

Bernie Corker, P.E. – 2002 ASPE Membership Chairman

NSPE's new Enterprise Membership holds a lot of promise for recruiting engineers to our state society. Employers with many engineers can sign them all up at once. The new joining method is designed to accommodate both for-profit and not-for-profit entities. It allows management to recognize the professional status of its engineers and provide a professional community in which they can be recognized and nurtured.

There was a time when professional memberships and training were considered the perks only of top-level management. Today, employers realize the necessity and benefits of signing up personnel at all levels-- for the leadership opportunities and the new skills to be learned and practiced.

Through NSPE's five communities of service, engineers find they can be as active or passive as they choose. They can become involved in their local community, mentor students in programs like MATHCOUNTS, or become active chapter members.

If they choose to "sit it out," members can simply receive information delivered in print and at local seminars. Or information can be received through electronic means. Members can share work, stories and concepts with other engineers throughout the country and the world by becoming involved online.

Enterprises can now sign up all of their engineers at one time at a 10% dues savings from both NSPE and ASPE. To demonstrate the benefits of enterprise membership to decision-makers, NSPE will prepare a customized Power Point presentation for any qualified corporation, consulting firm, government agency or educational institution considering participation. The presentation shows graphically how management and the engineers both benefit from membership in NSPE.

Membership chairs of chapters are invited to submit a list of manufacturing firms, consultants, educational institutions or government agencies in your chapter area who employ a dozen or more engineers. Download an Enterprise Membership Prospect Form from the NSPE website – www.nspe.org - by clicking on the "NSPE gives you the *Edge*" icon in the right column.

For a full explanation of how the enterprise membership works, or to discuss how to schedule presentations for enterprise membership in your chapter area, contact NSPE's Rob Bergeron at 703-684-2832 or rbergeron@nspe.org.

ASPE'S 2002 CIRCLE OF EXCELLENCE AWARDS PROGRAM

The Alabama Society of Professional Engineers is pleased to announce they are now receiving nominations for their 2002 Circle of Excellence Awards Program. ASPE will be receiving nominations for the following categories within the program. For nomination forms visit the ASPE Website.

INDIVIDUAL AWARDS

ENGINEER OF THE YEAR
YOUNG ENGINEER OF THE YEAR
ENGINEERING STUDENT OF THE YEAR
ENGINEERING EDUCATOR OF THE YEAR
DISTINGUISHED SERVICE AWARD

PRACTICE DIVISIONS

CONSTRUCTION
INDUSTRY
PRIVATE PRACTICE
GOVERNMENT

CORPORATE/INSTITUTION/PROJECT

ENGINEERING PROJECT OF THE YEAR
NEW PRODUCT OF THE YEAR
ENGINEERING FIRM OF THE YEAR
ENGINEERING DEPARTMENT OF THE YEAR

Deadline for submittal of nominations is Friday, April 19, 2002. To obtain nomination forms or for more information, please contact: **Connie Gipson, P.E.**, ASPE Awards Committee Chairman, Phone (256) 885-7786 or the ASPE website at www.aspe-al.com.

Awards and Recognition

AMERICAN COUNCIL OF ENGINEERING COMPANIES OF ALABAMA 2002 ENGINEERING EXCELLENCE AWARD WINNERS

Honoring exceptional work in the engineering field, the American Council of Engineering Companies of Alabama (ACEC/AL) is proud to announce the following recipients of the 2002 Statewide Engineering Excellence Awards Competition (EEA): Grand Award: Volkert & Associates, Three Mile Creek Severe Weather Attenuation Tank Facility - Mobile, Alabama; State Award: Malcolm Pirnie, Inc., Sewer Rehabilitation: Phase II Renovation - Chickasaw, Alabama; Honorable Mention: Gallet & Associates, Inc., Quintard Mall Addition - Oxford, Alabama; Honorable Mention: Gresham Smith & Partners, Green Springs Highway Revitalization - Birmingham, Alabama



The Engineering Excellence Awards competition is a design contest sponsored annually by ACEC/Alabama to recognize the engineering achievements that demonstrate the highest degree of merit and ingenuity. For more than forty years, consulting engineers across the state of Alabama have entered their most innovative designs in this statewide competition. Entries are judged on the basis of uniqueness & originality; technical value to the engineering profession; social & economical considerations; complexity; and how successfully the project meets the needs, including time & budget constraints of the client.

The award recipients will be honored on Tuesday, February 19, 2002 at the Montgomery Area Engineers Week Luncheon in February. The annual awards ceremony and luncheon is traditionally held during National Engineers Week to commemorate Alabama's Engineers for their contributions to society, and to progress in our state. Special thanks is extended to the competition judges who took valuable time out of their busy schedules to carefully review each project. Finalists will proceed to the next phase to enter the national level competition. A gala event will be held on March 12, 2002 in Washington, DC to honor award recipients. President George W. Bush has been invited to attend, as well as Congressional Members and members of the President's Administration. For more information contact: Michael S. Boatfield, Public Relations Liaison, ACEC/Alabama 334.264.1500 aceca@bellsouth.net

2002 ALABAMA ENGINEERING HALL OF FAME TO HOLD 2002 CEREMONY

Rodney Summerford, P.E., ASPE-AEHOF Liaison, Mobile Chapter

TUSCALOOSA, Ala. – The State of Alabama Engineering Hall of Fame will induct six individuals and honor two projects and one corporation/institution during a ceremony on Saturday, Feb. 23, 2002 at The Club in Birmingham. The State of Alabama Engineering Hall of Fame was founded by proclamation of the governor in 1987 to honor, preserve and perpetuate the outstanding accomplishments and contributions of individuals, projects, corporations and institutions that have brought and continue to bring significant recognition to the state. Joining the 79 individuals already inducted into the Hall of Fame will be:

Joe W. Forehand, the chairman and CEO of Accenture, who has dedicated his 30-year career to make Accenture the world's leading provider of management and technology consulting services and solutions.

A native of Alexander City and a graduate of Auburn University, Forehand is *Consulting Magazine's* Most Influential Consultant and was named by *Information Week* as one of the 15 most inspirational figures in information technology. He currently serves on the Business Steering Committee of the Global Business Dialogue on E-Commerce.

Tom D. Kilgore, president of Progress Ventures, a part of a Fortune 250 company – Progress Energy. A leader in the energy industry, Kilgore pursues the answers to energy challenges by bringing to fruition his vision for ground-to-grid operations.

A University of Alabama alumnus, Kilgore has been named a Distinguished Engineering Fellow by the UA College of Engineering, the College's highest honor, and a Distinguished Mechanical Engineering Fellow. He is responsible for establishing the Progress Energy Mechanical Engineering Corporate Scholars Program at UA, which provides financial aid to future engineers. A native of Sand Mountain, Kilgore has served on the Harvard Electricity Policy Group and the Georgia Chamber of Commerce, among other groups.

T. Keith King, P.E., president, CEO and board chairman of Volkert & Associates, a firm ranked in the top one percent of engineering design firms in America. As principal of the I-10 Twin Bridges over Mobile Bay, the Cochrane/Africatown U.S.A. Bridge over the Mobile River, and the state coal-export facility in Mobile, King's projects have been recognized three times by the Hall of Fame.

Awards and Recognition

A native of Frisco City and graduate of Auburn University, King received that university's Distinguished Service Award and was honored as the Auburn College of Engineering's Outstanding Alumnus. He currently serves on the Board of Advisors and Board of Directors of Mobile's Chamber of Commerce.

William H. Lawler, who directed and designed the development of the B-2 "Stealth Bomber" from initial flight to delivery to the U.S. Air Force as an operational weapon system. Today, Lawler serves as vice president and general manager of strategic operations and planning for The Boeing Co. in Missouri.

A native of Russellville and a graduate of The University of Alabama, Lawler has authored numerous technical papers on structural dynamics, and has appeared in television documentaries on the B-2 Bomber, including History Channel specials. Lawler currently serves as a member of the UA Aerospace Engineering Department Advisory Board.

Ed L. Reynolds, president of network operations for Cingular Wireless, who began his career as an Auburn University co-op student at South Central Bell. In 1989, Reynolds began the task of bringing cellular services to rural areas in five states, including Alabama. For a time, he served concurrently as president of BellSouth Mobility, BellSouth Mobility DCS and American Cellular Communications Corporation.

Reynolds, who received a Bachelor's degree in Electrical engineering from Auburn University and an M.B.A from The University of Alabama, currently serves on Auburn's Electrical and Computer Engineering Industrial Advisory Board and as director of the Atlanta College of Art. He is a native of Montgomery.

Jim S. Voss, a retired U.S. Army colonel, who has logged 202 days in space as a NASA astronaut. Voss recently carried out a five-and-a-half month mission on the International Space Station, in summer 2001. Voss served more than 15 years in the Army and is a Distinguished Graduate of his Infantry Officer Basic Course. He is the recipient of the NASA Outstanding Leadership Award and Distinguished Service Medal.

A native of Opelika, Voss is a graduate of Auburn University and was recently awarded an honorary doctorate from the University of Colorado.

Also to be honored at the induction are two projects: **American Cast Iron Pipe Company's 65-megawatt Contiarc furnace** and the **Mercedes-Benz M-Class plant**.

ACIPCO's 65-megawatt Contiarc furnace is the only one of its kind in the world for melting iron. The electric furnace is designed to save energy, reduce pollution and accommodate raw materials other than increasingly scarce coke and clean scrap, which are used in standard production of ductile iron pipe.

The Contiarc's electricity is supplied by its own substation located across the street from the ACIPCO plant in Birmingham. Its power supply is the largest of its kind in the world. The Contiarc furnace was constructed as a test facility in Birmingham in 1997 by ACIPCO foundry experts with assistance by Alabama Power Company engineers and the German design/engineering firm SMS Demag.

Located near Tuscaloosa, the **Mercedes-Benz M-Class manufacturing plant's** million square feet houses the plant's body, paint and assembly "shops," along with its administrative facilities, under one roof. The open layout was designed to foster a team approach and make the 1,900 employees feel at home, as more than 300 vehicles are produced daily. Since its completion in summer 1996, the plant's M-Class vehicle has won more than 40 automotive awards. It is now sold in 135 countries.

A recent contribution of \$1.5 million was given by Mercedes-Benz to The University of Alabama and Stillman College to create co-op opportunities and scholarships for students. A \$600 million plant expansion, expected to be complete in late 2003, will create 2,000 new jobs in Alabama.

In the corporation/institution category, **Jones, Blair, Waldrup and Tucker Inc.** will be honored.

Jones, Blair, Waldrup and Tucker Inc., a consulting engineering corporation in Gadsden since 1944, serves as city engineer of 14 Northeast Alabama municipalities across seven counties. JBWT provides services in traditional civil engineering matters such as street and highway design, but the preservation of clean water supplies have become its specialty. In Calhoun, Etowah and Marshall counties, JBWT is responsible for expanding public water service to more than 60,000 citizens. The firm engineered Calhoun County's direct filtration plant, which enabled the county to begin treating raw water from two existing, but previously untapped, sources. JBWT also increased Gadsden's pumping capacity threefold.

Profiles In Excellence



Herb Shivers, P.E. Huntsville Chapter

As NASA's designated Center of Excellence for Space Propulsion located in Huntsville, the Marshall Space Flight Center (MSFC) leads the Agency's efforts in development, implementation and advocacy of advanced Earth-to-orbit and in-space propulsion systems and technologies.

Within MSFC, the Engineering Directorate (ED) provides state-of-the art (SofTA) engineering services to internal and external customers. ED enables safe and affordable access to space and enhances knowledge of Earth and the Universe. ED has four major departments: Avionics; Structures, Mechanics, and Thermal; Materials, Processes and Manufacturing; and Engineering Systems. About a third of the engineers at MSFC are in ED.

ED provides engineering discipline support to the various MSFC project Directorates and also has an office that facilitates and coordinates the development of advanced technologies within ED, MSFC, NASA and other Federal Agencies. For example, five Technology Thrust Areas have been identified: Advanced Avionics Architecture, Advanced Cryogenic Tanks, Advanced Manufacturing, and Space Environments and Effects.

The Avionics Department provides flight and ground support electrical, electronic, and software systems to enable, direct, and track spacecraft, launch vehicles and payloads. SofTA facilities include antenna ranges, audio laboratories, and scanning electron microscopes. The Department can simulate an entire mission from launch to operations and landing.

The Structures, Mechanics, and Thermal Department, has broad expertise in the design, development, evaluation, analysis and testing of spacecraft structures, mechanical systems, and mechanical ground support equipment. Current assignments include space transportation and propulsion, Microgravity materials science, and optical systems. The Department's testing expertise and laboratory facilities are nationally recognized. Tools include infrared thermography, computer modeling, world-class environmental test facilities with chambers for testing in thermal vacuum, controlled humidities, and simulated altitudes up to 100,000 feet.

The Materials, Processes and Manufacturing Department develops, tests, and characterizes new materials for use in spacecraft and payloads. Advanced materials include metals and non-metals, fuels, lubricants, ceramics, and ceramic matrix composites, thermal and cryogenic insulation, structural adhesives, elastomeric seals, and environmentally friendly material replacements. The Department houses several laboratories including simulated space environment, cryogenics and fuel compatibility, combustion research, thermal acoustics, corrosion, nondestructive evaluation, physical and mechanical properties test and more. The Department's Materials and Processes Technical Information System is a comprehensive database of materials information.

The Engineering Systems Department (ESD) performs systems related engineering services and support functions. Primary functions include systems engineering support, configuration and data management, and environments definition and analysis. The Department conducts system level analyses in Systems Modeling and Simulation, Radio Frequency Communications Systems Analysis, Supportability and Logistics Engineering, Mass Properties, Integrated Schematics Development, and Human Engineering Analysis. The Army-NASA Virtual Innovations Laboratory (ANVIL) is a joint effort with the Army Aviation and Missile Command and is housed and managed by ESD. The laboratory applies virtual reality technology to human modeling and design visualization/analysis of human interaction with complex systems. Environmental analyses include electromagnetic, space, and terrestrial/planetary environments. The Department also manages the NASA Technical Standards Program, which has recently gone on-line with electronic access to National Standards and an on-line update notification system to provide users the knowledge that standards have been changed. A "lessons learned" database is also part of the system. For more information surf to "<http://www.msfc.nasa.gov/>".

ASPE MEMBER RECOGNITION



Have you recently received a promotion or been recognized by your peers or community for engineering excellence or community service? Has one of your engineering assignments been recognized for outstanding achievement? ASPE would like to know. ASPE wishes to enhance the image of the engineering community by spreading the good news both in the

Alabama Engineer publication as well as the ASPE Website. Please forward this information to Kathryn Wilhelm, Editor of the Alabama Engineer at kwilhelm@volkert.com or by phone at (251) 342-1070 x362.

Profiles In Excellence

34TH DISTRICT ALABAMA STATE SENATOR HARRY E. MYERS, JR., P.E. ASPE Mobile Chapter Member

"The Alabama State Senate is truly a culture shock for a P. E. To transition from the world of absolutes to the world of abstractions necessitates a restructuring of thought processes.

"For an engineer who is taught to methodically analyze a problem by definition, cause, effect, alternative solutions and best available options, the legislative process at first appears completely arbitrary. However, as you eventually realize, the citizens of the State usually bring forth a problem, a legislator defines the problem and attempts to determine the cause, effect and best available legislative alternatives. But at this point politics is interjected! As an engineer is sometimes limited by the prohibitive cost of the best possible solution; so the legislator is limited by what is politically possible. However, the basic thought processes are very similar.

"Engineers offer exceptional problem solving skills to the legislative process and I, for one, would encourage and welcome fellow P.E.'s to join me on Goat Hill. It's not rocket science, but it sure is challenging!"

Hap has been the State Senator for the 34th District since 1994. He is active on the following Senate Standing Committees: Chairman, Local Legislation No. 3, Judiciary, Deputy Chairman, Finance and Taxation General Fund, Banking and Insurance, Small Business and Economic Development, Agriculture and Forestry.

He has been elected by fellow senators to the Ethics & Conduct Committee. Senator Myers is currently a member of the following committees: Legislative Joint Committee on Transportation, Balanced Budget Evaluation Committee, Finance and Budgets Joint Interim Committee, Forestry Study Committee, Judicial System Study Commission, Permanent Oil and Gas Study Committee, Port Authority, State Docks Bond Commission.

Hap Myers, P.E. is not only a respected engineer in the Mobile Area but a respected legislator. Born in Mobile, Alabama in 1938, he was educated in the Mobile County Public School System. Hap is a graduate of Auburn University, receiving B.S. Degrees in Business Administration and Civil Engineering. He has been employed as a consulting engineer since 1961, serving municipal and industrial clients throughout the southeast. Principal areas of his expertise include long range planning, finance and operations, strategic planning and municipal water and wastewater. He was employed by BCM Engineers from 1961 until 1999 and moved up through the company from EIT to Chairman and CEO. In 1999, Hap joined the firm of Malcolm Pirnie, Inc., and currently serves as Vice President.



Harry E. "Hap" Myers, Jr. P.E.
Alabama State Senator
ASPE Mobile Chapter Member

ASCE CELEBRATES 150 YEARS OF ENGINEERING EXCELLENCE

Lloyd Pitts, P.E., ASCE-Alabama 150th Anniversary Chairman

ASCE will celebrate its 150th anniversary in 2002. The yearlong celebration officially kicked off at the ASCE National Convention in Houston in October. The Alabama Section, Branches and Student Chapters are well underway now in planning for the celebration. A few key events that the Alabama Section of ASCE is sponsoring/co-sponsoring in 2002 include:

- Transportation Conference on February 12-13 in Montgomery
- West Point Bridge Design Contest
- Legislative Reception
- Building Big
- Joint Engineering Societies Meeting in Huntsville in April
- Construct Bridge for Boy Scouts
- Annual Meeting in Gulf Shores in August
- Birthday Celebration in Birmingham with historical top ten civil engineers/projects highlighted

National ASCE has committed \$3.5 million to this celebration effort on a national level, including a commemorative postage stamp, the National Building Museum Exhibit, traveling exhibits, updating the Smithsonian CE Exhibit, TV broadcast on civil engineering, charring National Engineers Week 2002, educational Outreach (K-12), government receptions, and sister societies outreach. The celebration will culminate at the 2002 ASCE Convention.

At the State Section, Branch and University levels, we can highlight civil engineering in 2002. Activities may include building a display at the local library, speaking engagements, writing news articles for local papers, working for Habitat for Humanity, adopting a local school and supporting Engineers Week. So let's get ready for a celebration of our Profession with the Sesquicentennial of ASCE in 2002.



Articles of Interest

FRONT END LOADING (FEL): SCOPE OF WORK DEVELOPMENT TO CONTRACTUAL STAGE

John E. Allen, P.E., Huntsville Chapter

Challenges occur at every turn in a project, but none affect the true success of a project as much as the effective Front End Loading (FEL) work undertaken by a client at the beginning of a project. FEL is a process by which business goals are aligned with capital and maintenance expenditures, and presented in the development of a well-defined scope of work. Often, the scope of work developed by the client lacks in many areas of clarity and detail required for accurate engineering, design, and construction cost proposals. This lack of clarity, i.e. FEL, leads inevitably to change orders during project execution, ultimately affecting total project cost and the execution timeline. Of course, many times a client does not have either the resources or the internal staff disciplines to assist in this scope of work development. Many projects are initiated far sooner than they should with no regard to deliverables and clarifications in exactly what management is requesting. But in the same breath, it is exactly those needs of management that a FEL process works so well to accomplish their financial and schedule driven goals. To put it simply, every consumer wants to know that the money they are willing to spend will attain for them a product that is inherently a good value for their money. Engineering, design, and construction work is no different in regards to this principle.

Many companies do understand the need for a well-defined scope of work, and the importance of FEL to the viability of their projects. Companies must show financial accountability and strength to their investors, all of which applies to the bottom line. It can be shown that successful businesses thrive where profitability is the key factor in their business and market decisions. It is unwise for any company, government, or individual to enter into any project large or small without some measure and/or guarantee that they will be financially viable to support their profitability goals. Therefore, the more focus that is placed in FEL, the more likely those goals can be attained.

FEL begins the moment a concept is placed on the table and discussions evolve to proceed to a scoping phase. This phase places the importance on developing the "true" needs of the project. For instance, the selection of a blower and bag house system, with 15% capacity for future expansion, may be a better selection than the system with 50% expansion capability. These differences obviously affect the as installed first costs, but also operations and maintenance costs due to increased horsepower, bag sizes, and foundation sizes. The extra 35% capacity may never be utilized, thus there is no reasoning to pay up front for this expanded capability. It would negatively impact the immediate profitability of the project as well as the ongoing fixed costs for the system. This methodology of decision making can be made on all of the phases of the project. As the development of the complete FEL package proceeds, the true needs of the project and subsequent expenditures are prioritized. Included in this process are project team reviews and approvals, by which various team members from the management, engineering, operations, and maintenance team can have input to the proposed scope of work. This process accounts for the inclusion of ideas into the project such as maintainability and operability of the equipment, all of which are methods to accomplish the profitability goals for the company.

Obviously, the time spent during this FEL process does require financial resources to accomplish. It can be historically shown that average FEL development costs are typically 10-15% of the total engineering and design fee for the project to acquire a scope of work and costs within 10% accuracy. For instance, if the project engineering and design fee was estimated at \$450,000, then it can be expected that the FEL effort will consume \$45,000-\$67,500 of that fee to prepare the necessary deliverables. Some clients may find these costs to be high, but, again, this expenditure can guarantee the financial viability and alignment of the project to the corporate goals, eliminating the costly change orders in the field, which cause schedule and cost overruns. In comparison, it may even be determined through the FEL effort that the proposed project does not align with company goals, whether they are financial or production goals. Thus, the decision could be made to not continue with the project based on the findings of the FEL work. In summary, the more money expended during FEL will provide a more defined scope, thereby reducing scope changes during construction.

Independent companies can be utilized to quantitatively evaluate the proposed project FEL documentation by comparison to similar projects and project data from around the world. One such company is Independent Project Analysis (IPA), with its North American office in Ashburn, Virginia. This company specializes in the evaluation of projects based on their extensive database of project evaluations and information contained in the FEL documentation. Their methodology has been utilized by companies such as bp-Amoco, Georgia Gulf, Merck, and Kimberly Clark.

In conclusion, scope changes during construction account for the majority of the financial and schedule overruns during project execution. Many, if not all, scope changes can be mitigated thru proper FEL before any contract is executed and any work begun. The amount of money and time spent during the scope of work and development stage has the most potential to positively affect the success of the project and contribute to the successful completion of the project.

About the Author: John E. Allen, P.E. Vice President/C.O.O. Cornerstone Engineering Group, P.C., Decatur, AL; Email: jallen@cegpc.com.

You Be The Judge

2002 NSPE Milton F. Lunch Ethics Contest

About Milton F. Lunch. Milton F. ("Milt") Lunch, NSPE's General Counsel from the 1940s until the 1980s was critical to the establishment of the NSPE Board of Ethical Review and the development of the NSPE Code of Ethics in the 1950s. During his tenure as NSPE General Counsel, Milt presented numerous papers and authored influential articles about the importance of licensure, ethics and professionalism. He died early in 2001.

.....

All current NSPE individual members, NSPE state societies, and NSPE chapters (including student chapters) are invited to participate in the 2002 National Society of Professional Engineers (NSPE) Milton F. Lunch Ethics Contest. Match your wits with experienced professional engineers and engineering students throughout the country. NSPE's Board of Ethical Review (BER) is furnishing you with a real FACT situation involving an engineer who is offered, and subsequently accepts, a position with one company, but decides to combine a post-graduation vacation with a visit to a different company who also offers him a position. Given the FACTS, you are asked a QUESTION about the ethics of the engineer. Contestants are encouraged to read and discuss the FACTS of the case and answer to the QUESTION. Then you are to develop DISCUSSION AND CONCLUSIONS using the format of the NSPE Board of Ethical Review. You are also to give REFERENCES citing specific sections of the NSPE Code of Ethics for Engineers. (Click here for a copy of the [NSPE Code](#) and [a sample BER case](#) for your reference). You may also want to check these websites: www.nspe.org and www.niee.org. All entries must be 750 words or less (DISCUSSION and CONCLUSION) and received by **Friday, April 6, 2002**. (Be sure to include REFERENCES. However, REFERENCES are not counted in total number of words). Send entries to: 2002 NSPE Milton F. Lunch Ethics Contest, NSPE Legal Department, 1420 King Street Alexandria, VA 22314 Fax: (703) 519-3763 Phone: (703) 684-2840 E-mail: mcannon@nspe.org. The winning entry will be recognized in *Engineering Times* and NSPE state societies and chapters will receive an award of \$500. If an individual member is declared a winner, the \$500 prize will be awarded to that individual's NSPE chapter, student chapter, or state society.

The 2002 NSPE Milton F. Lunch Ethics Contest (Fact Situation)

Engineer A is a graduating senior with excellent credentials from X University. Engineer A has had a series of job interviews with engineering companies from around the U.S. Following interviews with several industrial companies, Engineer A decides to accept an offer with ABC Incorporated located in his hometown of Townville and plans to notify ABC the following week. In the interim period, Engineer A receives a call from Engineer B, an executive with XYZ Incorporated, a potential employer with whom Engineer A interviewed. On behalf of XYZ, Engineer B offers Engineer A, a position with XYZ and invites Engineer A, at XYZ's expense, to visit XYZ's headquarters in Mountainville, a city located near a resort area following Engineer A's graduation. Engineer A had earlier decided he would not accept a position with XYZ if offered a position by ABC because Engineer A wanted to live near Townville to be close to family and friends and also because ABC provided better long-term professional opportunities. However, after receiving the call from XYZ, Engineer A decides to accept the invitation to visit XYZ's headquarters and combine the trip with a post-graduation vacation, believing that the visit to XYZ will broaden Engineer A's knowledge of the employment market, as well as future professional opportunities with XYZ. A week after the trip, Engineer A calls ABC and informs the company that he will accept the position with ABC.

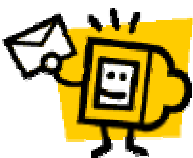
Question: Was it ethical for Engineer A to accept the invitation to visit XYZ headquarters?

References: (To be submitted by the Contestant)

Discussion: (To be submitted by the Contestant)

Conclusion: (To be submitted by the Contestant)

NOTE: In order to maintain anonymity for purposes of judging, the actual body of the entry should not include any reference to the state society, chapter, member, student, university, or any other individual group(s) which submitted the entry. However, be sure to provide the names and addresses of (1) your NSPE chapter or state society, and (2) the individual(s) responsible for submitting the entry, on a separate cover sheet accompanying your entry.



REQUEST FOR EMAIL AND ADDRESS UPDATES

Have you recently changed employers or moved? If you have an email address and have not provided it to ASPE, please consider doing that as soon as possible. Please provide your current addresses and phone numbers to ASPE, as soon as possible. It will be greatly appreciated. Please forward your updates to Pat Christians, Executive Director of Alabama

Society of Professional Engineers, 1075 13th Street South, Suite 312, Birmingham, AL 35294-4440 or by email at pchristi@eng.uab.edu.

State Board Winter 2002 Meeting Highlights

January 10, 2002 ASPE State Board Meeting called to order by Guy O'Connor, P.E. State ASPE President.

Meeting Site: Thursday, 10 January 2002, from 5:00 p.m. until 7:00 p.m., in the Dean's conference room at the UAB School of Engineering in Birmingham.

Secretary's Minutes

Executive Director - Christians

The meeting minutes of the Board meeting held on September 26, 2001 had been sent out previously for review. President O'Connor invoked Bylaw 24 for accepting the minutes as presented. Lamar Hawkins made the motion to accept; the motion was seconded by Ken Roy. Motion PASSED.

Financial Report

State Treasurer – J C Vance, PE

Guy O'Connor invoked Bylaw 24 for accepting the treasurer's report as presented. Kathryn Wilhelm made the motion to accept. The motion was seconded by Ken Roy. Motion PASSED.

Sustaining Partners Program

Chairman - Kathryn Wilhelm, PE

Revised Sustaining Partners Program Agreement Form, Created Solicitation Letter emailed to all Chapter and State Officers. Initiate Official Fundraising Drive in February Note: Only Sustaining Partner Contributions with a value of \$250 will have a link on the ASPE website. Guy O'Connor stated that it is the intention to utilize the sustaining partner program not only to solicit a financial commitment from companies but also a manpower volunteer commitment. Pat Christians is currently following up with the individual chapter presidents to contact potential sustaining partners. Buzz Vance suggested that ASPE sends a letter to the member's supervisor thanking them for allowing their employee participation and the professional development they received in ASPE including the sustaining firm partner funding request.

The Alabama Engineer / Website / Chapter Coordination

Chairman & Editor - Kathryn Wilhelm, PE

Routinely speaking with chapter secretaries to ensure information on website is accurate and soliciting comments for other ways to be more responsive to membership. This effort will be evidenced by the next issue of the *Alabama Engineer*. The new ASPE website up and running. The website has been updated with the latest information received from the chapter secretaries. I hope to begin achieving the past issues of the *Alabama Engineer* starting with the Fall 2001 Issue. The *Alabama Engineer* has been reformatted in an attempt to be more informative and responsive to the memberships needs. It is my current plan to issue the *Alabama Engineer* as a bi-monthly publication with article from various contributing members around the state. It is anticipated that we will use either UAB or the Southern Company for printing to keep publication costs within budget.

Annual Meeting & Awards Committee Report

Chairman - Connie Gipson, PE

The 2002 Annual Meeting is to be a joint meeting between ASPE, LES, and the Arkansas Society of Professional Engineers (ARSPE, to distinguish from ALSPE). The 2002 Annual Meeting will be a joint meeting with ASPE, Louisiana Engineering Society, and the Arkansas Society of Professional Engineers. The meeting is scheduled for June 30-July 3, 2002, at the Grand Marriott, Point Clear, Alabama. Note this is a change from the previous Board meeting minutes. A preliminary schedule/agenda has been developed for the tri-state committee to review. Alabama will be preparing the schedule/agenda brochures, arranging for the golf and tennis events with the resort, and working on a student presentations event. A professor at UAB has been contacted to assist with the student program.

Announcement, Nomination, and Ballot forms have been developed for the 2002 Circle of Excellence Awards program. The forms have been made "comprehensive", to include all potential award categories in one package for ease in distribution. The Announcement and Nomination forms are to be distributed to all chapters and university/college contacts in January, by e-mail unless requested otherwise. The deadline for nominations to be returned is April 19, 2002. Awards are scheduled to be presented at the annual meeting in Point Clear in early July.

MathCounts

State Coordinator - Danny Holmberg, PE

Registration is closed and numbers are down this year from last in most chapters. All local competitions will be held in February and the State Competition is scheduled for March 16, 2002 at the AUM campus in Montgomery, Alabama. Mayor Bobby Bright will open the competition with a welcome message. We have asked Governor Siegleman to make the awards presentations but have received no confirmation.

ASPE PAC/JECA Partnership and ASPE – PEPP / ACECA Partnership

Chairman - Hack Sain, PE

Tom Coker has been hired (\$10,000 commitment). Mr. Coker will visit the major metropolitan areas to discuss what legislation we as engineer's are trying to affect. Renee Casillas is serving as the Executive Director of ACECA and JECA. A two-prong approach will be made to influence legislation and get the engineers position known to legislators. The first will be from a lobbying effort headed by Tom Coker. The second will be from a grass roots effort by direct contact from engineers known by local legislators.

AL Engineering Hall of Fame

Kathryn Wilhelm, PE for Rodney Summerford, PE

Ceremony will be held in Birmingham on February 23, 2002 at the Club. Mr. Keith King will be inducted into the Hall of Fame. All ASPE members especially those in Birmingham are encouraged to attend the event. Mr. David Williams will be given the two ASPE tickets to attend the event on behalf of ASPE.

President Guy O'Connor adjourned the meeting at 6:48 pm.

Respectfully submitted by Kathryn Wilhelm, PE, ASPE State Secretary

2001-2002 ASPE Officer Directory

| OFFICE | NAME | EMAIL | EMPLOYER | WORK PHONE |
|--|--------------------------|--|----------------------------|--------------|
| President | Guy O'Connor, PE | goconnor@volkert.com | Volkert & Associates | 251-342-1070 |
| Pres-Elect | Connie Gipson, PE | cgipson@csc.com | Earth Tech, Inc. | 256-885-7786 |
| Secretary | Kathryn Wilhelm, PE | kwilhelm@volkert.com | Volkert & Associates | 251-342-1070 |
| Treasurer | J C (Buzz) Vance, PE | jcvance@southernco.com | Southern Company Svcs. | 205-992-7733 |
| VP-North | Kevin Meyer, PE | kevin.meyer@redstone.army.mil | Redstone Arsenal | 256-842-0033 |
| VP-Central | Bernie Corker, PE | bernie.corker@thaad.army.mil | Redstone Arsenal | 256-955-1792 |
| VP-South | Danny Holmberg, PE | dholmber@mwwssb.com | Montgomery Water Board | 334-206-1626 |
| Reg'l Dir. | Lamar T. Hawkins, PE | lthpc@aol.com | self | 205-458-8485 |
| Past-Pres. | Randy Bunt, PE | rcbunt@southernco.com | SouthernCompany Svcs. | 205-992-7475 |
| BIRMINGHAM CHAPTER | | | | |
| President | David L Williams, PE | davidw@reverecontrol.com | Revere Control Systems | 205-824-0004 |
| Vice Pres | Marc W Thompson, EI | mthompson@ellardconstr.com | Ellard Construction | 205-956-2846 |
| Secretary | J Darren Hamrick, PE | dhamrick@sain.com | Sain Associates | 205-940-6420 |
| Treasurer | Edwin "Win" Jones, PE | jonesw@vmcmail.com | Vulcan Materials Co. | 205-298-3706 |
| State Dir. | Harold Hite, PE | hiteh@bek.com | BE&K | 205-872-6275 |
| State Dir. | Earl Pearce, PE | epearce@alltel.net | self | 205-461-6349 |
| State Dir. | Hack Sain, PE | hsain@sain.com | Sain Associates | 205-940-6420 |
| HUNTSVILLE CHAPTER | | | | |
| President | Kevin Meyer, PE | kevin.meyer@redstone.army.mil | Redstone Arsenal | 256-842-0033 |
| Vice Pres | Alvin Crawford, PE | abcrawford@bwsc.net | Barge Wagner Sumner Cannon | 256-533-1561 |
| Secretary | Alvin Crawford, PE | abcrawford@bwsc.net | Barge Wagner Sumner Cannon | 256-533-1561 |
| Treasurer | Larry Ward, PE | lwsquared@aol.com | Scientific Research Corp. | 256-428-9323 |
| MOBILE CHAPTER | | | | |
| President | David Webber, PE | dwebber@volkert.com | David Volkert & Associates | 251-342-1070 |
| Vice Pres | Edmund Lawrence, PhD, PE | | retired | 251-626-4436 |
| Secretary | Drew Dyas, PE | ddyas@dymasusa.com | DMA | 251-621-9009 |
| Treasurer | Lynn Smith, PE | lei@zebra.net | Lightning Engineering | 251-661-4449 |
| State Dir. | Dave Upton, PE | dupton@tcocompanies.com | TCO Companies | 251-666-2443 |
| MONTGOMERY CHAPTER | | | | |
| President | Greg Gillian, PE | gmg1115@aol.com | Larry Speaks & Associates | 334-262-1091 |
| Vice Pres | Steve Kelly, PE | kellyengineering@mindspring.com | Kelly Engineering | 334-396-9922 |
| Sec/Treas | Kevin M Blake, PE | kblake@ctitesting.com | CTL, Inc. | 334-260-9174 |
| State Dir. | Danny Holmberg, PE | dholmber@mwwssb.com | Montgomery Water & Sewer | 334-206-1626 |
| MUSCLE SHOALS CHAPTER | | | | |
| President | D L "Denny" Sockwell, PE | dsockwe@wisealloys.com | Wise Alloys, LLC | 256-386-6082 |
| Vice Pres | H J "Jack" Robison, PE | robengr@peoplepc.com | retired | 256-383-6306 |
| Sec/Treas | J D "Don" Lokey, PE | jdlokey@tva.gov | TVA | 256-386-2035 |
| State Dir. | James B. Cahoon, Jr. PE | jbcagoonjr@aol.com | retired | 256-370-7321 |
| NORTHEAST CHAPTER | | | | |
| President | Randall Whorton, PE | rwhorton@whortonengineering.com | Whorton Engineering | 256-820-9897 |
| Sec/Treas | Kenneth Roy, PE | kenroype@aol.com | self | 256-237-4880 |
| State Dir. | Kenneth Roy, PE | kenroype@aol.com | self | 256-237-4880 |
| TUSCALOOSA CHAPTER (Mathcounts Coordinator) | | | | |
| | Steve Nelko, P.E. | snelko@tsteel.com | Tuscaloosa Steel | 205-562-1434 |
| AUBURN CHAPTER (Mathcounts Coordinator) | | | | |
| | Steve Taylor, PhD., P.E. | staylor@eng.auburn.edu | Auburn University | 334-844-3534 |
| SOUTHEAST CHAPTER (Mathcounts Coordinator) | | | | |
| | Glen Morgan, P.E. | gmorgan@polyengineering.com | Polyengineering | 334-793-4700 |

Please plan to attend the
Fourth Annual Joint Engineers' Legislative Reception

February 19, 2002, at 5 pm

RSA Plaza Terrace, 770 Washington Avenue, Sixth Floor, Montgomery

Your RSUP by February 15, 2002 is greatly appreciated.

You may fax this completed form to the JECA office at 334-264-0099

Or mail to JECA, 660 Adams Avenue, Suite 333, Montgomery AL 36104

Or email your information to ACECALabama@aol.com

This is your opportunity to get to know your legislators. Tell them what's on your mind. Talk to them about the importance of engineers and engineering in today's society. And when engineering issues/crises arise in the Statehouse, they'll have a reliable source to whom they can turn! We look forward to seeing you there!

Yes! I will attend! Name _____

Engineering Society I am a Member of _____ Position held? _____

Your address _____ zip _____

Phone _____ email _____



**Alabama Society of
Professional Engineers**

A State Society of the National Society of Professional Engineers
1075 13th Street South, Suite 312
Birmingham, AL 35294-4440



BALLOT ISSUE

The Alabama Engineer • Winter 2002 Issue