

The Alabama ENGINEER

STATE OFFICERS

2002-2003

PRESIDENT
 PRESIDENT-ELECT
 PAST PRESIDENT
 VICE PRESIDENT-NORTH
 VICE PRESIDENT-CENTRAL
 VICE PRESIDENT-SOUTH
 SECRETARY
 TREASURER
 REGIONAL DIRECTOR
 EXECUTIVE DIRECTOR

Charles "Hack" Sain, PE
 Kathryn Wilhelm, PE
 Connie F Gipson, PE
 George Hamilton, PE
 Joe Leamon, PE
 Danny Holmberg, PE
 John Allen, PE
 J C Vance, III, PE
 Lamar Hawkins, JD, PE
 Pat Christians

A publication of the ALABAMA SOCIETY OF PROFESSIONAL ENGINEERS

FALL 2003 ISSUE

PRESIDENT'S MESSAGE

HACK SAIN, PE

First, I plan to determine what has been the history of ASPE. If we do not know our history, we will keep repeating the undesirable. A consultant has been retained for Strategic Planning. I have always been a strong advocate of planning. Strategic Planning will determine our strategies, then tactics can be developed to carry out.

We plan to have sessions for Strategic Planning in Mobile, Montgomery, Birmingham and Huntsville. During this time, a website will be maintained by our Consultant for input and information. After all input has been received, Consultant will meet with Presidents, Presidents-elect and Vice-Presidents to finalize plan.

For Strategic Planning to be successful, we must have input, therefore, we must have good attendance at planning sessions.

I plan to volunteer our members for tasks that will make ASPE a better society.

Our future will depend upon planning and prosecuting a plan that has been agreed upon. If we keep doing as we have done in the past, we should expect the same results we experienced in the past.



ASPE BOARD ANNOUNCES NOMINATION FOR SOUTHEAST VICE PRESIDENT

The ASPE Board of Directors will nominate Lamar T Hawkins, JD, PE for the position of Southeast Vice President when the Southeast Region meets in Puerto Rico in October. If elected, Mr Hawkins will be installed at the NSPE Summer Meeting in July and serve as the Southeast Vice President for the 2004-2006 term.



Mr Hawkins currently serves as ASPE's Regional Director. He is president of a small consulting engineering firm and practices as a consulting engineer. He also has a small law firm and practices civil law in the areas of worker compensation, personal injury and family law. Mr Hawkins is a licensed PE in Alabama, Georgia and Mississippi. Mr Hawkins graduated from Auburn University with a BS in Civil Engineering in 1963. He received his JD in 1988 from Birmingham School of Law.

Mr Hawkins is pictured here with Mr Robot, at the NSPE Summer Meeting in Orlando, in July 2002.

INSIDE THE ALABAMA ENGINEER

VOLUME 3, NO. 3 • FALL 2003

Editor, John Allen, PE

- | | | |
|---|---|---|
| 1 | PRESIDENT'S MESSAGE | Charles "Hack" Sain, PE, ASPE State President |
| 1 | ASPE BOARD NOMINATES HAWKINS FOR SE REGION VP | |
| 2 | INSIDE THE ALABAMA ENGINEER | John Allen, PE, ASPE State Secretary |

ASPE AROUND THE STATE

- | | | |
|---|---------------------------------------|--|
| 3 | Report from the Regional Director | Lamar T Hawkins, JD, PE |
| 3 | Birmingham Chapter News | |
| 3 | Mobile Chapter News | |
| 3 | Montgomery Chapter News | |
| 3 | Muscle Shoals Chapter News | Don Lokey, PE, Muscle Shoals Chapter Secretary |
| 4 | Report on the Quad-State Meeting 2003 | Connie Gipson, PE, ASPE Past-President |

ENGINEERING LICENSURE IN ALABAMA

- | | | |
|---|--|---------------------------------|
| 5 | Congratulations to Recently Licensed Professional Engineers In Alabama | |
| 6 | "Maintaining Your Multiple Engineer Licenses Made Easier..." | Victoria Zambito, RedVector.com |

FROM THE ASPE BOARD

- | | | |
|-----|--|---|
| 7 | Strategic Planning 2003 | "Hack" Sain, PE, ASPE State President |
| 8-9 | Board Meeting Highlights | Kathryn Wilhelm, PE, ASPE State President-Elect |
| 10 | 2003-2004 Calendar of Events | Pat Christians, ASPE Executive Director |
| 11 | ASPE State and Chapter Officer Directory | |
| 12 | List of the 2003 Awardees | |

*This newsletter is published by John Allen, PE, ASPE State Secretary '03-'04.
Comments, corrections, ads and articles for submission may be to johnbethallen@worldnet.att.net
Be sure to include "Alabama Engineer" in your email 'subject' block.*

WHO ARE WE?

The Alabama Society of Professional Engineers (ASPE), founded in 1951, is a state organization of engineering professionals from all disciplines that promotes the ethical and competent practice of



engineering. Through its nine local chapters, ASPE, not only represents its members, but all ABET accredited engineering graduates from all disciplines throughout the State of Alabama. Promoting the value of the Professional Engineer (PE) license and enhancing the engineering profession have been top priorities at ASPE for more than 50 years. Supporting sound licensure laws helps to protect the public's health, safety, and welfare by ensuring that those who earn a PE license have met education, examination, and experience requirements. ASPE is also a leader in promoting ethical standards. NSPE's Code of Ethics for Engineers has been time-tested as the standard by which engineers measure ethical performance of professional duties. ASPE recognizes the importance of setting high professional standards and promoting values, principles, ethics, and best practices that maintain respect for the engineering and design profession.

ASPE AROUND THE STATE

The NSPE Southeast Region is made up of these states---AL, FL, GA, KY, MS, NC, SC, TN, VA and Puerto Rico. We have two VPs to represent our states' common interests to NSPE. The VP's term that just expired in July 2003 was Robert Hildenbrand (MS). Currently our senior VP is Phillip Reiss from VA and our junior VP is Kevin Cooley from FL. When the Southeast Region representatives meet for the annual conference in Puerto Rico in October, we will elect the next VP to serve the 2004-2006 term.

The Vice Presidents are charged with relating the happenings, desires and needs of the states with NSPE. This is accomplished by telephone conferences with state leaders, at meetings held during the NSPE Winter and Summer Conferences, and at the annual regional meeting held each October.

The SE Regional Meeting is a good opportunity for state leaders to interact with each other. Here, our leaders receive leadership training, networking, and knowledge sharing to identify specific programs and plans that might help our own state in growing the membership and finding new revenue sources. This year's meeting will be held at the Hyatt Dorado Beach Hotel in Puerto Rico on October 16-19. Hack Sain, Pat Christians and I will attend this meeting.

Four ASPE representatives attended the SE Regional Meeting in Atlanta last year: Connie Gipson, Hack Sain, Pat Christians, and myself. We all expressed the pleasure of meeting and learning from the leaders of our surrounding states. I encourage you to consider attending all Regional Meetings. We hope to be the host state in 2004. We'll find out soon and let you know via the website: aspe-al.com.

BIRMINGHAM CHAPTER NEWS

The Chapter met for lunch at Riverchase Country Club on Sept 9. 22 were in attendance. State President Hack Sain also attended and presented awards: **Alicia Rudolph**, PE, ASPE Young Engineer of the Year; **Barry Andrews**, PhD, PE, Engineering Educator of the Year; **Leslie Kearley**, ASPE Student Engineer of the Year; **Marc Thompson**, PE, PEC Engineer of the Year; **J C "Buzz" Vance**, PE, PEI Engineer of the Year. Mr Sain also spoke about the future of ASPE and the need for a renewed strategic plan, which he intends to develop in the next few weeks with the chapters' help. Our **strategic planning workshop** will held Sept 29 at the Holiday Inn on Oxmoor Road from 3:30 to 5:30pm. All chapter members are encouraged to attend and participate!
2003-04 officers: Darren Hamrick, PE, President; Herb Jernigan, PE, V-Pres; Alicia Rudolph, PE, Sec/Treas; Earl Pearce, PE, State Director; Harold Hite, PE, State Director.

MOBILE CHAPTER NEWS

The Mobile Chapter met for lunch on Sept 17. 25 people attended to hear State President Hack Sain discuss his vision for ASPE. He introduced consultant Jim Sisson, Vantage Associates, and the chapter immediately got to work building a new strategic plan for ASPE. Much discussion ensued! We left the meeting invigorated with the ideas for a new and better ASPE. Please check our webpage for upcoming meetings: www.aspe-al.com (look under News&Articles).
2003-04 officers: Drew Dyas, PE, President; Lynn Smith, PE, V-Pres; Wes Chiniche, Sec; John Sumrall, PE, Treas; Ed Lawrence, PhD, PE, State Director.

MONTGOMERY CHAPTER NEWS

2003-04 officers: Greg Gillian, PE, President; Cedric Campbell, PE, V-Pres; Kevin Blake, PE, Sec/Treas; Joe Eichelberg, PE, State Director.

MUSCLE SHOALS CHAPTER NEWS

The Muscle Shoals Chapter met at Logan's Roadhouse in Florence on Sept 16. Doug Myers, PE gave a presentation on the Waste Reduction and Technology Transfer (WRATT) Foundation. This non-profit organization draws on the talents of retired engineers and scientists for making on-site waste reduction assessments at Alabama industries, hospitals, etc. Our meeting was attended by 20 engineers and 8 guests, and several attendees expressed interest in exploring opportunities with the WRATT program. On Tuesday evening Oct 21, our chapter is scheduled to conduct a tour of TVA's Colbert Fossil Plant. This 1350-megawatt coal-fired facility is located on the Tennessee River about 10 miles west of Tusculumbia, AL. Selective catalytic reduction (SCR) reactors are currently being installed at Colbert for nitrogen-oxides air emissions control, and other major environmental projects are being planned for the near future.
2003-2004 officers: Denny Sockwell, PE, President; Tim Stults; V-Pres; Don Lokey, PE, Sec/Treas; James Cahoon, PE, State Director.

ASPE ANNUAL MEETING AND CONFERENCE 2003

QUAD-STATE MEETING 2003 – SANDESTIN, FLORIDA

Contributed by Connie Gipson, PE, ASPE Past-President

This past June, Alabama, Arkansas, Mississippi, and Louisiana got together for the Quad-State Engineering Societies Meeting, held at the Sandestin Resort on Florida's Gulf Coast. The meeting provided plenty of educational opportunities mixed in with awards luncheons, business meetings, and the Installation Banquet, all set in the beautiful new facilities of the BayTowne Wharf area of the resort.

The professional development seminars had excellent attendance. The Alabama Society of Professional Engineers played a large part in arranging for the speakers at this meeting, and it was gratifying to see the number of engineers eager to hear the presentations. There seemed to be plenty of ready participation from the audience during question and answer time, a tribute to the presenters ability to capture attention and provide useful, thought provoking information.

ASPE held a lively and well-attended Board meeting on Monday evening of the conference. Discussion of society business was really rolling, and fortunately your Board members had the dedication to stay to the very end. Ms. Terry Helmlinger, P.E., NSPE President for 2003-2004, joined us for a time to say hello and tell us where she sees Alabama fitting in to the national level work coming up. She pointed out that the Southeastern Region of NSPE is one of the most active, and provides a significant percentage of the members who participate on national committees and task forces. We want to keep that up!

Our annual awards luncheon was held on Tuesday and welcomed at least one new member we had the pleasure of meeting. Following a delicious buffet lunch, the society presented our annual awards for Engineer of the Year, Young Engineer of the Year, Engineering Student of the Year, Engineering Educator of the Year. Also returning to our awards ceremony this year were the well-received Practice Division awards – Construction, Industry, Private Practice, and Government. Check this issue of the Alabama Engineer for specific awards winners' names – then call and congratulate them! *[Editor's Note: A complete listing of awardees can be found on page 12.]*

The conference wrapped up with the Installation Banquet on Tuesday night. Following some of the best food we've had at a conference-center banquet, guest speaker Moon Griffon of Louisiana gave us some highlights of his on-going watch of Louisiana politics via his radio show. Special thanks to Louisiana for arranging for the outside-the-ordinary entertainment.

The Banquet highlight was the installation of the 2003-2004 officers for the four participating states. New officers were sworn in, and the outgoing officers were asked to make a special pledge of support. Tokens of the transfer of office were requested, and where the official gavels were not available, engineering ingenuity stepped in (pens, spoons, and other useful instruments were exchanged).

Thank you to everyone who attended, and thanks to the four state societies' executive directors who put in the pre-planning and the work at the conference to make it one of our best ever!

ASPE MEMBER RECOGNITION



Have you recently received a promotion or been recognized by your peers or community for engineering excellence or community service? Has one of your engineering assignments been recognized for outstanding achievement? ASPE would like to know. ASPE wishes to enhance the image of the engineering community by spreading the good news both in the Alabama Engineer publication as well as the ASPE Website. Please forward this information to John Allen, PE, Editor of the Alabama Engineer at johnbethallen@att.net or by phone at (256) 652-6857.

ENGINEERING LICENSURE IN ALABAMA

CONGRATULATIONS TO THESE NEWLY LICENSED PROFESSIONAL ENGINEERS

John Anthony, PE	Birmingham	Gonzalez Strength & Assoc	Wesley Ballard, PE	Kellyton	AL-DOT
Frederick Beal, Jr, PE	Gurley		Michael Beedie, PE	Mobile	Volkert & Associates, Inc
Vladimir Belotserkovskiy, PE	Birmingham	Univ of Ala--Birmingham	John Bertalan, PE	Gadsden	Mid-South Products Engrg
Christopher Brazel, PE	Northport	University of Alabama	Duane Brock, PE	Alabaster	Southern Company Svcs
Christopher Broders, PE	Mobile	The Trane Company	Marianne Busbee, PE	Mobile	Baskerville-Donovan Inc
William Butler, PE	Cullman	AL-DOT	Glen Carter, PE	Pleasant Grv	Structural Design Solutions
Derrick Collier, PE	Mobile	US Army Corps of Engrs	Shane Cook, PE	Huntsville	Civil Solutions LLP
Leslie Corlett, PE	Birmingham	Gresham Smith & Partners	Jennifer Cox, PE	Wilsonville	Southern Company Svcs
Alvin Crawford, PE	Gurley	Barge Waggoner Sumner & Cannon	Kenneth Criswell, PE	Montgomery	US Army Corps of Engrs
James Dailey, PE	Montgomery	ADEM	Michael Dailor, PE	Daphne	Degussa-Huls
Lynn Doyle, II, PE	Mobile	Geotechnical Engrg	Stephen Eder, PE	Madison	Facility Risk Consultants
Gordon Emslie, PE	Huntsville	Univ of Ala—Huntsville	William Farneman, PE	Muscle Shoals	Bigbee Steel Bldgs
John Faurot, PE	Helena	Southern Company Svcs	Douglas Fox, PE	Madison	NASA
Thomas Garrett, PE	Wetumpka	ADEM	John Gill, PE	Birmingham	CRS Engineering
Christopher Green, PE	Helena	Alabama Power Company	Jeffrey Gunter, PE	Trussville	Jeffco Environmental Svcs
Steven Harris, PE	Huntsville	Garver Engineers	Michael House, PE	Birmingham	Sain Associates, Inc
David Hubbell, PE	Mobile	Olin Corporation	Geoffrey Hudgins, PE	Decatur	D & S Consulting Engrs
James Jeffcoat, PE	Birmingham		Perry Jinright, III, PE	Montgomery	Thompson Engineering
John Johnson, Jr, PE	Chelsea	Entegreat, Inc	Kyle Kelly, PE	Pelham	Rast Construction Inc
Frank Leatherwood, III, PE	Calera	Lane Bishop York Delahay	Bradley Lindsey, PE	Deatsville	Colbert Co Rd Dept
John Lucas, PE	Troy	AL-DOT	Eugene McGraw, PE	Madison	Sverdrup Technology Inc
Jeremy McKee, PE	Albertville	CDG Engineers & Assoc	Claude Moore, PE	Hayden	MBA Structural Engrs Inc
Kevin Moore, PE	Alabaster	Sain Associates Inc	John Murphy, III, PE	Mobile	Hosea Weaver & Sons Inc
Stuart Nelson, PE	Huntsville	Sverdrup Technology Inc	William Noyes, PE	Scottsboro	V C E Inc
Benjamin Parrott, PE	Tuscumbia	The Worthington Steel Co	Matthew Person, PE	Auburn	American Buildings Co
Joshua Pierce, PE	Montgomery	Goodwyn Mills & Cawood	David Ray, PE	Gadsden	Univ of Ala—Birmingham
Ryan Reed, PE	Huntsville	Garver Engineers	Charles Reynolds, PE	Montgomery	ADEM
Jeffrey Robertson, PE	Harvest	Jacobs Sverdrup	Brian Rohling, PE	Hoover	Jeffco Environmental Svcs
David Scarborough, PE	Dothan	Scarborough & Associates	James Scott, PE	Montgomery	CH2M Hill
Brian Searcy, PE	Pinson	US Infrastructure Inc	Mark Setele, PE	Huntsville	AJT & Associates Inc
Rhonda Shockley, PE	Northport	Almon & Associates	Riley Sims, PE	Tuscaloosa	TTL Inc
David Singleton, PE	Mobile	Chevron Products Co Inc	Bryan Smith, PE	Trussville	Trussville Utilities
James Smith, PE	Ft Payne	ADL Inc	Jeffery Smith, PE	Calera	Earth Tech Inc
Valerie Smith, PE	Birmingham	Geoscience Group Inc	William Snipes, PE	Fayette	Fayette Co Commission
Christopher Snow, PE	Birmingham	B E & K Engineering	Douglass Stockham, IV, PE	Helena	Birmingham Water Works
Franklin Summers, III, PE	Tuscaloosa	McGiffert & Associates LLC	Nurul Talukder, PE	Alabaster	Barron Fan Technology
Rod Turochy, PE	Auburn		Sandra Vaughn, PE	Tallassee	CH2M Hill
Billy Webb, PE	Demopolis	Marengo Co Engineers	Patrick Wootton, PE	Montgomery	US Air Force
Marcus Zinnerman, PE	Pleasant Grv	Univ of Ala—Birmingham	Michael Clark, PE	Alabaster	ACIPCO
Stephen Clanton, PE	Huntsville	Jacob Engineering			

Maintaining Your Multiple Engineer Licenses Made Easier Through Online Services

By Victoria Zambito, RedVector.com

Engineers licensed in more than one state have historically had to do double duty as experts in the fine art of organization in order to keep track of their various state rules and regulations. Important requirements concerning license renewal, continuing education and acceptable course material vary state by state. Keeping track of these differences and knowing exactly what your obligations are is enough to give anyone a headache, but it has become an easier task with the growing popularity of the Internet and online continuing education services.

While engineering regulatory law and practices have become more standardized between states in the past several decades, there are still numerous differences worth noting. For example, the State of Alabama Board of Registration for Professional Engineers and Surveyors requires its engineer licensees to complete 15 hours of continuing education in any topic relevant to the practice of engineering. However, the Florida Board of Professional Engineers requires its licensees to complete eight hours of continuing education from board approved providers, and of those eight hours, four must be on Florida Laws and Rules. An engineer living in Alabama holding licenses in both Alabama and Florida may easily find courses to fulfill the Alabama requirement, but hard pressed to find a nearby seminar on Florida Laws and Rules. Situations like this are not uncommon for engineers licensed in more than one state.

Online continuing education courses take your location out of the equation. If you live in Alabama, but need a course on Florida Laws, you don't need to travel to Florida. You can take the course over the Internet. RedVector.com, an online education company, offers a course on Florida Laws and Rules for engineers which can be taken from anywhere in the world, as long as you have a computer and basic Internet access. According to RedVector.com President & Chief Operating Officer, Brent A. Craven, "Almost half of engineers who purchased our online course on Florida Laws and Rules lived outside of the state of Florida. The feedback we received on the convenience of this course was outstanding. We all know how difficult it can be to find an approved seminar in your area and then carve out the time from your busy schedule to attend. Instead, you can just log on to your computer, plug in the states you are licensed in and pull up a list of courses specific to your requirements. It just makes sense."

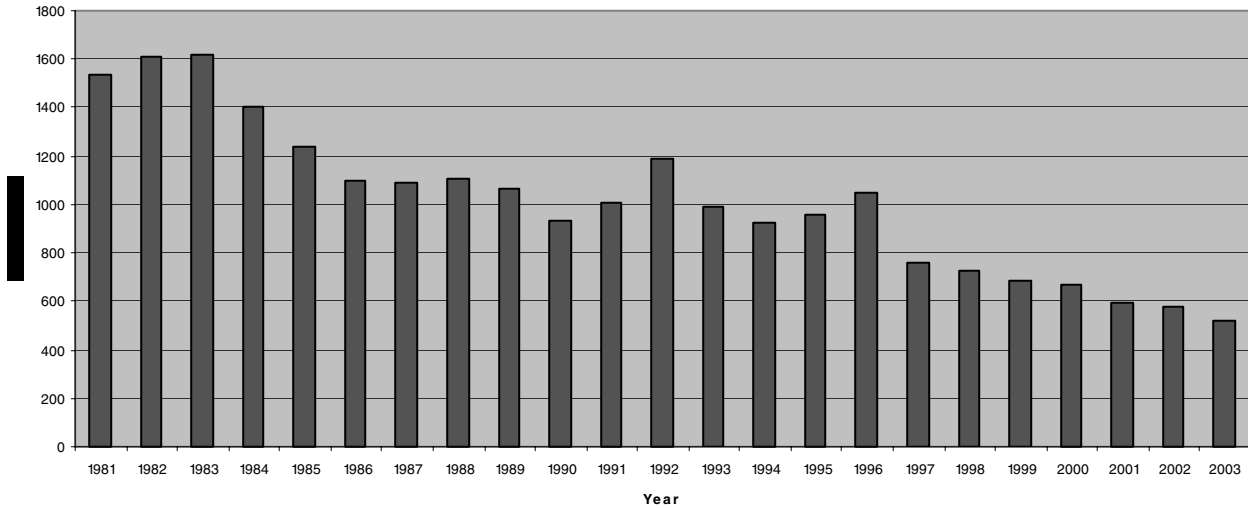
In addition to providing hard-to-find or state specific course topics, RedVector.com's online services extend to helping multi-licensed engineers figure out exactly how many hours worth of continuing education they need to satisfy their various state requirements. You may have licenses in two states, each with a 15 hour continuing education requirement but that does not mean you need to add the hours up and complete 30 hours. If you take courses which are approved in both states, you can knock out all of your requirements with just one set of 15 course hours. RedVector.com takes the necessary steps to have its online courses approved by all state boards requiring pre-approval. This prevents an engineer from completing 15 hours worth of courses and finding out those 15 hours were only approved in one state and now they have to take another 15 hours or more to satisfy other state requirements.

Now you should ask yourself, "How familiar am I with all my state board's rules and requirements?" To look up your professional licensing board by state, visit www.RedVector.com or call 1-866-546-1212 for more information.

STRATEGIC PLANNING 2003

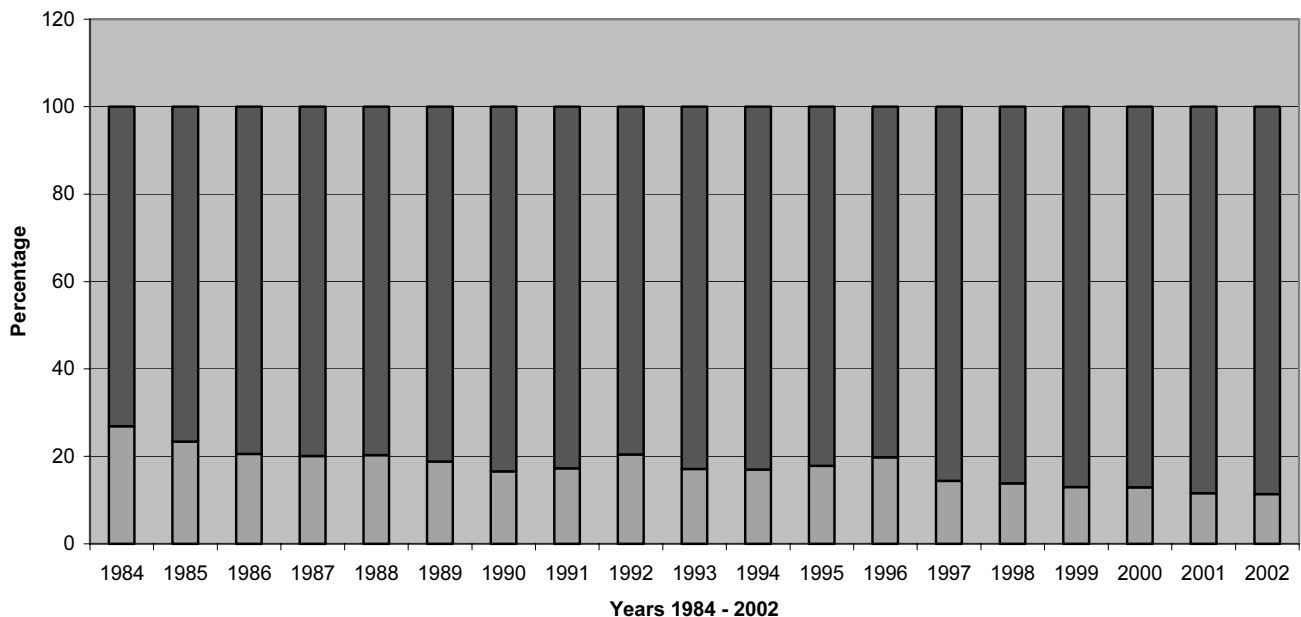
The diagrams below are provided by State President Charles "Hack" Sain, following months of meticulous fact-finding. What they depict is a society in need of strategic planning. Membership totals are declining as seen below. Generally speaking, professional organizations have seen a decline since the early 1990's, after Congress rescinded the tax break for these types of memberships.

ASPE Membership



There is hope for ASPE's future! The diagram below demonstrates the available "pool" of professional engineers in the state of Alabama who are potential members. A well thought out and prosecuted strategic plan will guide the society in the right direction and reach its goals. When Hack Sain and Jim Sisson (Vantage Associates) come to your chapter meeting, please make every effort to attend. Your input and ideas are vital to the success of the strategic plan, and ultimately to the reinvigoration of ASPE!

Market Share Membership



(The light portion of the bar indicates the percentage of in-state PE's who are members of ASPE)

JUNE 2003 ASPE State Board Meeting Highlights

ASPE Board Meeting – June 16, 2003 - 7:00pm - Sandestin, FL

Call To Order 7:09 pm

President Connie Gipson, PE

Roll Call

Secretary Kathryn Wilhelm, PE

A roll call of all state and chapter officers was conducted. We have a quorum with 15 officers in attendance.

Approval of 11 April 2003 Board Meeting Minutes

Gipson

Lamar Hawkins moved the minutes be accepted as written. Ken Roy seconded the motion. The motion PASSED unanimously.

Treasurer's Report

J C "Buzz" Vance, III, PE

No year end report since the meeting today has been held in advance of the end of the fiscal year. Buzz will provide the year-end report in September.

Buzz suggested that we change the end of the fiscal year to the end of May. The fiscal year would then begin on June 1st. Note ASPE doesn't receive the invoice from UAB for telephone service in June till August. Connie mentioned that it was beneficial for her to have to tackle establishing the budget for the fiscal year as her first task as president as it caused her to realize what she needed to do from a planning standpoint. After considerable discussion it was decided to leave the fiscal year as it is.

Ed Segner has suggested that the CDs be laddered to take advantage of changes in interest rates.

AEF: \$7,800 from sustaining firms to date. This money has been disbursed to the chapters. Set up report for AEF like the escrow account reports.

We paid for Mathcounts with funds raised. We owe monies to (Montgomery & Birmingham) for Mathcounts & the golf tournament totaling approximately \$6,900.

George Hamilton made the motion that the treasurer's report be accepted as presented. Hack Sain seconded the motion. The motion PASSED unanimously.

Chapter Reports

Muscle Shoals – As Submitted

Birmingham – 1st Recipient of the Scholarship was Will Christians, son of Bill and Pat Christians.

Mobile – Presented by Kathryn Wilhelm

New Officer Training Session in the Fall is suggested by Ed Segner. Where we are going and what we are doing. Forthcoming by Hack.

Regional Director's Report

Lamar T Hawkins, JD, PE

Lamar reported that the Southeast regional meeting of NSPE will be held on Oct 16-18 in Puerto Rico. It is important to have input. Kevin Cooley (FL) replaces Gus Hildenbrand (MS) on the Regional Board. They are trying to keep the cost of the conference to \$200 with add-ons. This is the one opportunity for the state officers to have input directly to NSPE. Lamar requested the Board to sponsor him as next VP for the SE Region. Randy Bunt has expressed an interest in becoming the Regional Director. Last VP of Southeast Region from ASPE was Keith King approximately 4 years ago. The southeast region has 2 vice presidents on the NSPE Board.

Harold Hite made the motion to sponsor Lamar Hawkins as the regional vice president of the southeast. Ed Segner seconded the motion. The motion PASSED unanimously.

Committee Reports

ASPE / PAC/JECA Partnerships

President-Elect Charles "Hack" Sain, PE

JECA is entertaining a proposal from a4, Inc. Publishers for the Georgia Engineer Publication

July 11th – 13th the NSPE Annual Meeting will be held in San Antonio, TX. Teresa Helmlinger – Incoming President of NSPE. – Monthly Installation of Dues by credit card.

AL Board of Licensure Liaison

Gipson

April 26th a public hearing was held about the changes to the licensure law. All changes were approved.

Constitution / Bylaws

Gipson

We have a revised set of constitution & bylaws; need 2/3 if membership to approve them. They will be posted on the website in a downloadable form for the review of the membership for 90 days.

Joe Leamon will spear head this effort as membership chairman. It was suggested that a postcard be sent out for approval by general membership.

Connie will be chairman of this Committee for the upcoming year.

JUNE 2003 ASPE State Board Meeting Highlights

Strategic PLANNING

Hack distributed a graph of membership vs years. Membership has decreased from 1600 (In 1981) to 520 (in 2003). Membership is going down and our costs are going up. It is estimated that at this rate the organization will cease in approximately 5 years. ASPE is Membership Analysis. Sponsor 4 townhall meetings, 12 to 15 members of the board in Huntsville, Birmingham, Montgomery, Mobile; set up Webpage—Vantage Associates—Questionnaire—Survey of membership. Cost of this service is \$7000. Harold Hite made a motion that the Board authorize the expenditure of up to \$8000 to Vantage Associates Inc for services of ASPE revitalization organization plans. Seconded by Gipson as read by Wilhelm. Motion PASSED unanimously.

Sain

Alabama Engineer/Website/Chapter Coordination

The website continues to be updated. Chapter secretaries have the ability to update their chapter information themselves. We need let them know they have that capability to do it.

Wilhelm

State Mathcounts

No Report. Mobile will host in 2004.

Wilhelm

Annual Meeting

We need to re-examine the format.

Gipson

Circle of Excellence Awards

Engineer of the Year	Young Engineer of the Year	Engineering Educator of the Year	Past President Guy O'Connor, PE
Kenneth Roy, Jr, PE	Alicia Rudolph, PE	Barry Andrews, PhD, PE	Student Engineer of the Year Leslie Kearley

Practice Division Awards

PEC: Marc Thompson, PE PEI: JC "Buzz" Vance, PE PEG: Bernie Corker, PE PEPP: Kathryn Wilhelm, PE

Membership

New PE's were sent letters congratulating them on their accomplishment and in Birmingham invited them to be our guest at their year-end banquet.

Joe Leamon, PE

Perhaps the strategic planning process may encourage new PE's to join organization. Joe stated as a young engineer he never received a letter from any organization and felt this might encourage them to join.

ASPE / PEPP / ACECA Partnerships

No Report. Hack has agreed to be our liaison to ACECA.

Sain

Old Business

None

Gipson

New Business

Gipson

JECA Newsletter proposal

Recommendation of an environmental engineer to serve on the Alabama Onsite Wastewater Board

Harold Hite made a motion that Connie write a letter of endorsement that Hack Sain be one of the three nominations forwarded to Regina Dinger. Seconded by Ed Segner. The motion PASSED unanimously. Connie will call Regina Dinger prior to sending the letter.

Comments from incoming President

Sain

- Hack noted that our attendance at the annual meeting that a skills that will advance their careers from a management and leadership standpoint.
- George Hamilton had a request from national standpoint who is ASPE's Engineer in Government representative. Bernie Corker has volunteered to be our representative.
- Bill Boggess P.E., was named the Engineer of the Year for the Military Engineer of the Year by SAME.
- Ed Segner is the head of the NPSE committee to get the Dean's to become licensed. So they will work on the professors on licensure and in turn the students. They are meeting with the Dean's Council.

Next Meeting to be announced later.

Meeting Adjourned at 9:15 pm

Gipson

These meeting minutes have been prepared by Kathryn A. Wilhelm, PE, ASPE State Secretary 2002-03, on June 16, 2003 for review by the Board members at the next State Board meeting.

2003-2004 ASPE CALENDAR

(Information provided is subject to change, with notice)

SEPTEMBER	9 23 26	STATE VOTERS GO TO POLLS TO DECIDE ON GOV RILEY'S PROPOSED TAX REFORM PLAN ASPE BOARD MEETING CONFERENCE CALL 11:30am STATE BOARD OF LICENSING MEETS IN MONTGOMERY (INFO: 334-242-5568)
OCTOBER	1 16-19	TAX FILINGS COMPLETED BY TREASURER NSPE SOUTHEAST REGIONAL MEETING IN PUERTO RICO
NOVEMBER	1 1 1 14 TBA	ASPE 2004-2005 OFFICER NOMINATIONS DUE NSPE NEW PRODUCT AWARD DEADLINE NSPE FEDERAL ENGINEER OF THE YEAR AWARD DEADLINE STATE BOARD OF LICENSING MEETS IN MONTGOMERY (INFO: 334-242-5568) REGULAR QUARTERLY MEETING OF JECA (INFO: 334-264-1500)
DECEMBER	1	NSPE PROFESSIONAL DEVELOPMENT AWARD DEADLINE
JANUARY 2004	TBA 16-19 TBA TBA	ASPE BOARD MEETING CONFERENCE CALL NSPE WINTER MEETING IN WASHINGTON DC REGULAR QUARTERLY MEETING OF JECA (INFO: 334-264-1500) STATE BOARD OF LICENSING MEETS IN MONTGOMERY (INFO: 334-242-5568)
FEBRUARY	1 TBA TBA TBA 18 22-28	NSPE AWARD DEADLINE FIRST DAY OF LEGISLATIVE SESSION LOCAL MATHCOUNTS COMPETITIONS TRANSPORTATION ENGINEERS CONFERENCE 7 TH ANNUAL JECA LEGISLATIVE RECEPTION, RSA PLAZA TERRACE, MONTGOMERY E-WEEK 2004
MARCH	TBA 15	STATE MATHCOUNTS COMPETITION, MOBILE ASPE 2004-2005 STATE OFFICER BALLOTS AVAILABLE
APRIL	TBA 15 15 30	ASPE BOARD MEETING ASPE STATE OFFICER BALLOTS DEADLINE ASPE 2004-2005 CHAPTER OFFICERS SELECTIONS DUE "WINTER'88" FUNDING REQUESTS DUE TO PRESIDENT-ELECT
MAY	TBA TBA TBA	NATIONAL MATHCOUNTS COMPETITION IN CHICAGO, IL STATE BOARD OF LICENSING MEETS IN MONTGOMERY (INFO: 334-242-5568) REGULAR QUARTERLY MEETING OF JECA (INFO: 334-264-1500)
JUNE	TBA TBA	ASPE BOARD MEETING ASPE ANNUAL MEETING
JULY	8-12	NSPE SUMMER MEETING IN HAWAII

For additional information, please visit these websites:

ASPE: www.aspe-al.com NSPE: www.nspe.org ACECA: www.aceca.org Licensing Board: www.bels.state.al.us

E-Week: www.eweek.org MathCounts: www.mathcounts.org

2003-2004 OFFICER DIRECTORY

OFFICE	NAME	EMAIL	EMPLOYER	WORK PHONE
President	C H "Hack" Sain, PE	hsain@sain.com	Sain Associates	205-940-6420
Pres-Elect	Kathryn Wilhelm, PE	Kathryn_wil@yahoo.com	McCrary-Williams, Inc	251-476-4720
Secretary	John Allen, PE	johnbethallen@att.net	Southern Construct.& Design	256-652-6857
Treasurer	J C (Buzz) Vance, PE	jcvance@southernco.com	Southern Company Svcs.	205-992-7733
VP-North	George Hamilton, PE	George.S.Hamilton@nasa.gov	NASA	256-544-4963
VP-Central	Joe Leamon, PE	joe4ski@hiwaay.net	retired	205-870-5637
VP-South	Danny Holmberg, PE	dholmber@mwwssb.com	Montgomery Water Board	334-206-1626
Reg'l Dir.	Lamar T. Hawkins, PE	lthpc@aol.com	self	205-458-8485
Past-Pres.	Connie Gipson, PE	cgipson@csc.com	Earth Tech, Inc.	256-885-7786

BIRMINGHAM CHAPTER

President	J Darren Hamrick, PE	dhamrick@sain.com	Sain Associates	205-940-6420
Vice Pres	Herb Jernigan, PE	hjernigan@pirnie.com	Malcolm Pirnie Inc	205-930-5700
Sec/Treas	Alicia Rudolph, PE	arudolph@volkert.com	Volkert & Associates Inc	205-214-5500
State Dir.	Harold Hite, PE	hiteh@bek.com	BE&K	205-872-6275
State Dir.	Earl Pearce, PE	epearce@alltel.net	self	205-461-6349

HUNTSVILLE CHAPTER

Contact:	Kevin Kennoy, PE	kkennoy@pdreng.com	PDR Engineers	256-551-0222
	Connie Gipson, PE	cgipson@csc.com	Earth Tech, Inc.	256-885-7786
	George Hamilton, PE	George.S.Hamilton@nasa.gov	NASA	256-544-4963

MOBILE CHAPTER

President	Drew Dyas, PE	ddyas@dymasusa.com	DMA	251-377-3568
Vice Pres	Lynn Smith, PE	lei1@greatermobile.com	Lightning Engineering	251-661-4449
Secretary	Wes Chiniche	wschinic@southernco.com	Alabama Power Company	251-694-2441
Treasurer	John Sumrall, PE	johsumrall@msn.com	Southern Development Council Inc	251-665-4649
State Dir.	Ed Lawrence, PhD, PE		retired	251-626-4436
Mathcounts	Melinda Immel, PE	mimmel@volkert.com	Volkert & Associates Inc.	251-342-1070
	Michael Beedie, PE	mbeedie@volkert.com	Volkert & Associates Inc.	251-342-1070

MONTGOMERY CHAPTER

President	Greg Gillian, PE	gmg1115@aol.com	Larry Speaks & Associates	334-262-1091
Vice Pres	Cedric Campbell, PE	cedric.campbell@gmcnetwork.com	Goodwyn Mills & Cawood	334-271-3200
Sec/Treas	Kevin M Blake, PE	kblake@ctftesting.com	CTL, Inc.	334-260-9174
State Dir.	Joe Eichelberg		AME Engineers, Inc	

MUSCLE SHOALS CHAPTER

President	D L "Denny" Sockwell, PE	dsockwe@wisealloys.com	Wise Alloys, LLC	256-386-6082
Vice Pres	Tim Stults	tostults@wisealloys.com	Wise Alloys, LLC	256-386-6995
Sec/Treas	J D "Don" Lokey, PE	jdlokey@tva.gov	TVA	256-386-2035
State Dir.	James B. Cahoon, Jr. PE	jbcagoon@hiwaay.net	retired	256-370-7321

NORTHEAST CHAPTER

President	Randall Whorton, PE	rwhorton@whortonengineering.com	Whorton Engineering	256-820-9897
Sec/Treas	Kenneth Roy, PE	kenroype@aol.com	self	256-237-4880
State Dir.	Kenneth Roy, PE	kenroype@aol.com	self	256-237-4880

TUSCALOOSA CHAPTER (Mathcounts Coordinator)

Steve Nelko, P.E.	snelko@tsteel.com	Tuscaloosa Steel	205-562-1434
-------------------	--	------------------	--------------

AUBURN CHAPTER (Mathcounts Coordinator)

Steve Taylor, PhD., P.E.	staylor@eng.auburn.edu	Auburn University	334-844-3534
--------------------------	--	-------------------	--------------

SOUTHEAST CHAPTER (Mathcounts Coordinator)

Glen Morgan, P.E.	gmorgan@polyengineering.com	Polyengineering	334-793-4700
-------------------	--	-----------------	--------------

The ASPE Board of Directors Congratulates the Recipients of the
2003 Alabama Circle of Excellence Awards

Engineer of the Year

Kenneth B Roy, Jr, PE
QA Associates, Anniston

Young Engineer of the Year

Alicia Rudolph, PE
David Volkert & Associates, Birmingham

Engineering Educator of the Year

Barry Andrews, PhD, PE
University of Alabama at Birmingham

Student Engineer of the Year

Leslie Kearley
University of Alabama at Birmingham

The Board also congratulates

Marc Thompson, PE (B'ham)
Bernie Corker, PE (Northeast)
J C "Buzz" Vance, PE (B'ham)
Kathryn Wilhelm, PE (Mobile)
The Birmingham Chapter

PEC Engineer of the Year
PEG Engineer of the Year
PEI Engineer of the Year
PEPP Engineer of the Year
Most Active Chapter in 2003

PS-15054



***Alabama Society of
Professional Engineers***

A State Society of the National Society of Professional Engineers
The University of Alabama at Birmingham
Hoehn Building, Suite 312 ❖ 1075 13th Street South
Birmingham AL 35294-4440

PRSR STD
U.S. Postage
PAID
Permit No. 1256
Birmingham, AL